



Innovate
UK

9 March 2022

Welcome

**Driving the Electric Revolution:
Building Talent for the Future 2
- for projects up to £50,000**

Agenda (timings)

#	Item	Approximate Timings	Presenter
1	Welcome & Introductions	09:00	Abbie Wood
2	Driving the Electric Revolution Challenge Overview	09:05	Venn Chesterton
3	Building Talent for the Future – Aims and Scope	09:10	Iain Mauchline
4	Competition Scope: Q&A	09:30	Sven asking Iain Mauchline
5	Competition Process	09:45	Abbie Wood
6	Competition Process: Q&A	10:00	Sven asking Abbie Wood
7	Support from Innovate UK	10:15	Sven Knowles
8	Summary	10:25	Venn Chesterton
9	Close	10:30	-

Welcome and Introductions

UK Research and Innovation:

- **Venn Chesterton** Deputy Challenge Director,
Driving the Electric Revolution
- **Dr Iain Mauchline** Innovation Lead,
Driving the Electric Revolution &
Electronics, Sensors & Photonics



Innovate UK:

- **Abbie Wood** Portfolio Manager, Innovate UK



Innovate UK KTN:

- **Dr Sven Knowles** Knowledge Transfer Manager





Innovate
UK

Introduction to Innovate UK and UKRI

Abbie Wood

UK Research and Innovation

We work with the government to invest over £7 billion a year in research and innovation by partnering with academia and industry to make the impossible, possible.

Through the UK's nine leading academic and industrial funding councils, we create knowledge with impact.



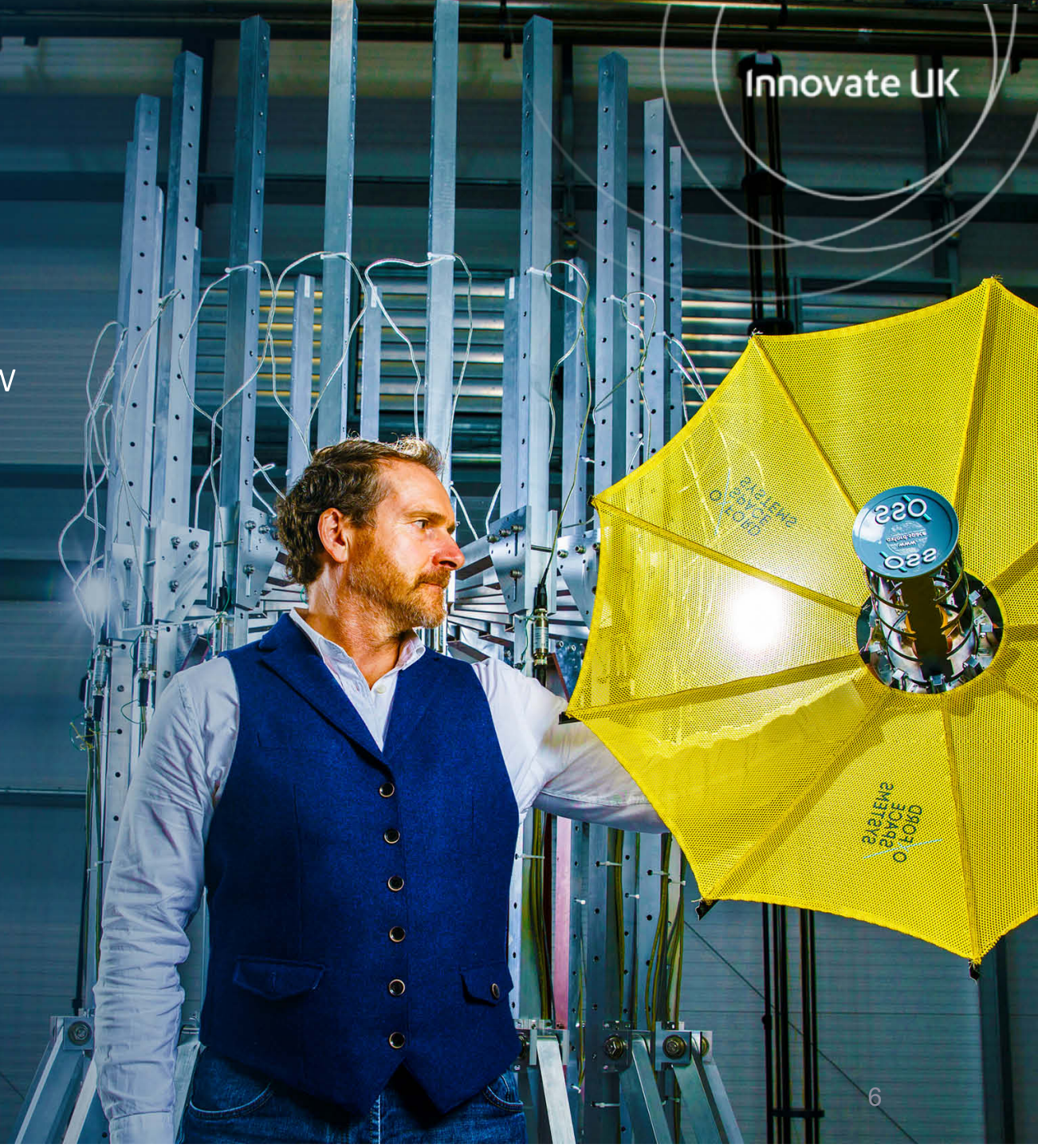
**UK Research
and Innovation**

Innovate UK

Innovate UK drives productivity and economic growth by supporting businesses to develop new ideas.

We connect businesses to the people that can help them, and fund businesses and research collaborations in all economic sectors, value chains and UK regions to accelerate innovation.

Innovate UK



Innovation is the key to UK's future growth and prosperity

UK ranks 4th in Global Innovation Index

Innovation accounts for up to 50% of labour productivity growth

Firms that persistently invest in R&D have higher productivity

Innovating companies are more likely to export and generate growth

Aims of today's briefing



To bring the scope and guidance to life, so that you fully understand the competition and the relevant rules and processes for applying for and undertaking a project



To give you the opportunity to ask us questions, and get appropriate guidance



To highlight where you can find help at KTN, including networking opportunities and application advice





Innovate
UK

Driving the Electric Revolution

Venn Chesterton



Challenge Overview

Venn Chesterton

Deputy Director – Driving the Electric Revolution

Driving the Electric Revolution



Power Electronics, Electric Machines and Drives (PEMD)

Identify **key gaps** in the UK PEMD supply chain and **help industry** fill them enabling delivery of **Net Zero**



Funding for industry

Investing **£80m of ISCF funding** for R&D projects



Networking and collaboration

Connecting industry, academia, RTOs & the government



Industrialisation and manufacturing

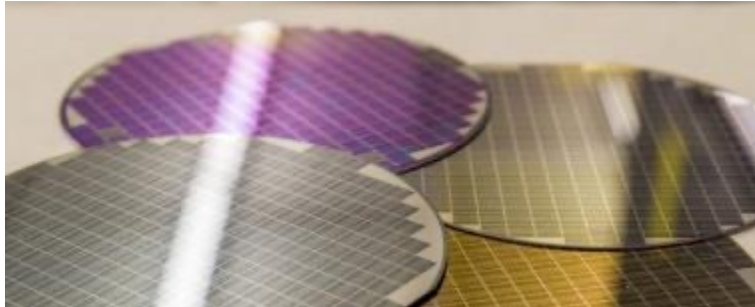
Leverage the **UK's world leading research** capability in PEMD



Talent growth

Define & fill the PEMD skills gap by **training, upskilling & reskilling**

Driving the Electric Revolution – Supply chain



Power Electronics

Development of semiconductors (Si, SiC, GaN) and their packaging to enable switching of high power (voltage and/or current) whilst minimising loss



Electric Machines

Conversion between electrical energy and kinetic energy through electromagnetic, mechanical & thermal design optimised for each application



Drives

Intelligent digital control systems embracing power electronics, passive components, thermal management, mechanical design and the overall system



Materials processing



Component manufacture

Manufacturing supply chain



System integration



Re-use and recycling



10-point plan

- Driving the Electric Revolution is focused on **building back better, supporting green jobs, and accelerating our path to net zero.**
- Power Electronics, Machines and Drives (PEMD) growth will deliver **high-skilled high-paid jobs that offer the extra satisfaction of helping to make our nation cleaner, greener and more beautiful.**
- We must look to manufacture the core technology to enable the **Green Industrial Revolution.** Importing technology will result in erosion of the sovereign supply chain and all the skills being delivered must encompass the manufacturing.



“If we apply the same zeal and ingenuity to stopping climate change as we have to tackling coronavirus, we can do so while transforming our economy, delivering jobs and growth across the country.”

Driving the Electric Revolution Investment

Driving the Electric Revolution challenge funding distributed to industry through tailored programmes addressing key opportunities in the UK PEMD supply chain: R&D, collaboration, talent, equipment & expertise.

£5_m

Short, high impact,
high resilience
supply chain
CR&D projects

£6_m

Initiatives in
addressing the
skills gap through
training, upskilling
and reskilling

£7_m

Fast start
accelerated
supply chain
CR&D activities

£22_m

Flagship programme
for high value/low volume
& high volume/high
efficiency manufacturing
supply chain
CR&D projects

£33_m

Industrialisation centres
supporting industrial
engagement with new
equipment & expertise
in PEMD scale up &
manufacturing

Driving the Electric Revolution Skills

Use Driving the Electric Revolution Challenge funding and access to industry expertise to efficiently and effectively add value, inclusivity and diversity in key areas of the UK's PEMD workforce, building on and complimenting existing skills initiatives in electrification sectors

- Building Talent for the Future (1) competition – BTFTF1
 - Quickly fill key skills gaps. Projects are just about to start see
 - <https://www.ukri.org/news/developing-the-uk-pemd-skills-landscape/>
- PEMD Skills Hub competition
 - Central hub providing signposting & access to training courses for UK PEMD community including learners & businesses, material for educators, and engaging information for outreach
- Building Talent for the Future (2) competition – BTFTF2
 - This current presentation is for projects with costs of up £50k



Competition Aims and Scope

Driving the Electric Revolution: Building Talent For The Future 2

Dr Iain Mauchline

Innovation Lead– Driving the Electric Revolution and
Electronics, Sensors & Photonics

Competition Aim

- Innovate UK's Driving the Electric Revolution challenge will invest up to £4.5 million in projects building talent for the future.
- The aim of this BTFTF2 competition is to create and deliver course content and materials that will support skills, talent and training across Power Electronics, Machines and Drives (PEMD) manufacturing and supply chains - building awareness of PEMD and filling key gaps in the UK's workforce talent and training capabilities.
- BTFTF2 has two competition strands:
 - the full stage competition (for projects £50k to £1M) following on from a successful EoI application and is by invitation only
 - a separate, open competition for projects with costs below £50K, for which you do not need to have applied into the expression of interest round (**this briefing event**)

Competition Scope (slide 1 of 4)

- We aim to fund a portfolio of projects, across a variety of key industrial needs and gaps in UK PEMD workforce skills, talent pipeline and training capabilities.
- The projects should demonstrate:
 - strong industrial links and a well-defined industry focus
 - an understanding and awareness of the PEMD industrial skills that are currently lacking and possible future requirements to enable the workforce
 - an innovative, ambitious and realistic idea, to meet a significant PEMD talent requirement
 - planning for, and commitment to, creating and maintaining the resource on an ongoing basis for a minimum period of 3 years after project completion
 - considerations of Equality, Diversity and Inclusion (EDI)
 - how will you provide new opportunities not already available, to the UK, a region or a specific group of underrepresented people and not already available as the capacity and capability to be delivered the project successfully and on time
 - value for money and evidence a return on investment, in terms of trained, upskilled & reskilled people
 - compatibility with the [PEMD Skills Hub](#)

Competition Scope (slide 2 of 4)

- The projects can:
 - produce content and material for outreach, engagement and learning purposes
 - conduct PEMD outreach and engagement exercises to individuals, academia, industry and other groups
 - generate and deliver course material or facilitate the running of courses
 - provide training or incentives for training to specific groups of underrepresented people or in specific training subjects

This list is not intended to be exhaustive and we are open to discussions on projects outside of these themes.

Competition Scope (slide 3 of 4)

Your project must focus on one or more of the following:

- defining and filling key gaps in the UK's PEMD manufacturing and supply chain workforce and training capability
- producing industry compatible training programs in PEMD
- promoting skills in design for manufacture and design for assembly
- increasing interaction between academia or training establishments and industry to ensure skills streams for the future, including: apprenticeships, internships, sandwich courses
- delivering academic courses or practical training areas such as: schools' engagement, upskilling and reskilling of existing workforce, technical courses and vocational training, undergraduate, postgraduate and continuing professional development (CPD)

Competition Scope (slide 4 of 4)

Your project must focus on one or more of the following:

- delivering academic courses or practical training areas such as HE, FE, technical colleges
- improving the quality and/or capacity of existing training delivery
- outreach and engagement material focusing on PEMD for all ages and levels in academia and industry
- supporting and promoting equality, diversity, and inclusion within PEMD technology training, manufacturing, or research
- provide providing training or incentives for training to specific underrepresented groups of people or in specific training subjects

Out of Scope

We have limited funding our aim is to provide best value for the PEMD community.

We will not be funding projects that:

- ✗ are not related to PEMD skills
- ✗ do not address a clear industrial need
- ✗ are PEMD CR&D projects
- ✗ have total project costs in excess of £50,000 (in this strand)
- ✗ are dependent on export performance
- ✗ are dependent on domestic inputs usage
- ✗ concern maintenance, servicing mechanics or aftermarket support

Participation: Project size & Duration

As mentioned previously BTFTF2 will have two strands.

- This briefing is for projects with costs under £50K and does not require participation in the Expression of Interest
- Funding will be available for up to 12 months

Key Dates

Timeline	Dates
Competition opens	w/c 7 March 2022
Briefing event	7 March 2022
Submission deadline	27 April 2022 at 11:00am
Applicants informed / feedback	1 July 2022
Projects to start by	1 October 2022

Summary: BTFTF2

- Two strands
 - the full stage competition (for projects £50K to £1M) following on from a successful Expression of Interest application and is by invitation only.
 - **this briefing** is for projects with costs up to £50K, open to any eligible participant
- Up to £4,500,000 available for a portfolio of projects across both strands to address the PEMD skills requirements
- Can be led by any UK registered organisation
- Within this strand projects can be funded for up to 12 months (i.e. for projects up to £50K)
- Any funded project will be expected to have an ongoing legacy to support the skills requirements



Innovate
UK

Competition Scope **Q&A**

Sven Knowles asking Iain Mauchline



Innovate
UK

Eligibility criteria

Abbie Wood

Previously submitted applications

This competition **does** allow you to submit a previously submitted application.

Previously submitted application	Not a previously submitted application
A previously submitted application is an application Innovate UK judges as <u>not</u> materially different from one you have submitted before (but it can be updated based on the assessors' feedback)	<p>A brand-new application, project or idea that you have not previously submitted into an Innovate UK competition</p> <p>OR</p> <p>A previously submitted or ineligible application which:</p> <ul style="list-style-type: none">✓ has been updated based on assessor feedback✓ <u>and</u> is materially different from the application submitted before✓ <u>and</u> fits with the scope of this competition

Eligibility criteria

Project eligibility	<p>To lead a project or work alone, you must:</p> <ul style="list-style-type: none">• be a UK registered business of any size, research organisation, research and technology organisation (RTO), academic institution, charity, not-for-profit, or public sector organisation• carry out its project work in the UK• intend to exploit the results from or in the UK
Total costs	no more than £50,000
Project start date	by 1 October 2022
Project length	between 6 and 12 months

Types of organisations we fund

- Business – Small/Micro, Medium or Large registered in the UK
- Research Organisation (RO):
 - universities (HEIs)
 - not-for-profit distributing Research & Technology Organisation (RTO) including Catapults
 - Public Sector Research Establishments (PSRE)
 - Research Council Institutes (RCI)
- Public sector organisations and charities doing research activity

Compliance with the UK Subsidy Control Regime

On 1 January 2021, the UK left the EU and is no longer subject to EU laws on State aid. We draw your attention to the guidance issued by BEIS: [Complying with the UK's international obligations on subsidy control: guidance for public authorities](#). Please be aware this is a living document and may be updated by BEIS as time progresses.

The set rules (typically GBER) which we previously relied on for the limits of what we could award, have now been replaced by internal decisions based on the new BEIS Subsidy Control Regime, and on policy, which will in turn set out bespoke eligibility requirements for each funding opportunity.

Innovate UK is offering funding for this competition in line with the UK's obligations and commitments to Subsidy Control. To ensure that Innovate UK remains compliant with the UK's international Subsidy Control duties in respect of:

- **The EU-UK Trade and Cooperation Agreement;**
- **Article 10 of the Northern Ireland Protocol: (successful applicants which are affected by the Northern Ireland Protocol will be funded in line with EU State aid regulations)**
- **Article 138 of the Withdrawal Agreement (some Union law applicable after 31 December 2020 in relation to the UK's participation in Union programmes and activities)**
- **The Subsidies and Countervailing measures within the WTO (ASCM);**
- **Any other Free Trade Agreements active at the time of award.**

All awards will be conditional on compliance at all times with the UK Subsidy Control Regime – this will be reflected in the terms and conditions of any award.

Minimal Financial Assistance (MFA, previously Special Drawing Rights)

Grant funding in this competition is awarded as minimal financial assistance (MFA). This allows public bodies to award up to £315,000 to an enterprise in a 3-year rolling financial period.

To establish your eligibility, we need to check that our support added to the amount you have previously received does not exceed the limit of £315,000 in the 'applicable period'.

The applicable period is made up of:

- (a) the elapsed part of the current financial year
- (b) the two financial years immediately preceding the current financial year

In your application, you will be asked to declare previous funding received by you. This will form part of the financial checks ahead of Innovate UK making a formal grant offer.

Due diligence

We will carry out financial health checks and going concern assurances on your organisation.

Certify you are eligible

When submitting an application, you must certify that you are eligible for funding. If you are unsure, please take independent legal advice before applying. Should you be successful, we will complete these financial checks and assurances before confirming the grant offer.

For more information on company sizes, please refer to the [Company accounts guidance](#).

Further information is available on our website in the general guidance.

Eligibility Criteria - EU State Aid Regulations – Northern Ireland Protocol

If you are an applicant who is conducting activities that will affect trade of goods and/or electricity between Northern Ireland and the EU as envisaged by Article 10 of the Northern Ireland protocol, then you must apply under European Commission State aid rules.

Certify you are eligible

When submitting an application, you must certify that you are eligible for State aid. If you are unsure, please take legal advice before applying. Should you be successful, we will apply this test as part of our viability checks before confirming the grant offer.

Further information is available on our website in the general guidance under state aid.

If you are applying for an award funded under State aid Regulations, the definitions are set out in the European Commission Recommendation of 6 May 2003.

Eligibility Criteria: Funding Opportunities

You can claim up to **100%** of your total eligible costs, up to a limit of £50,000.

What is collaboration?

In all collaborative projects there must be:

- at least two organisations claiming grant within the application (including the lead)
- evidence of effective collaboration

We would expect to see the structure and rationale of the collaboration described in the application.

Making more than one application

***across both strands of the competition**

- An organisation can only lead on one application but can be included as a collaborator in a further 2 applications.
- If an organisation is not leading any application, it can collaborate in up to 3 applications.
- If your organisation's number of applications falls outside of our eligibility criteria, you must provide justification by email to support@iuk.ukri.org at least 5 working days before the competition closes. We will decide whether to approve your request.

****If you are included in more than one application within this strand, please be mindful of the MFA grant funding limit of £315,000 over a 3-year rolling financial period.**

Other Innovate UK projects

If you have an outstanding final claim and/or Independent Accountant Report (IAR) on a live Innovate UK project, you will not be eligible to apply for grant funding in this competition, as a lead or a partner organisation

If you applied to a previous competition as the lead or sole company and were awarded funding by Innovate UK, but did not make a substantial effort to exploit that award, we will award no more funding to you

If you applied to a previous competition as the lead or sole company and failed to comply with grant terms and conditions

Key Dates

Timeline	Dates
Competition opens	7 March 2022
Briefing event	9 March 2022
Submission deadline	27 April 2022 at 11:00am
Applicants informed / feedback	1 July 2022
Projects to start by	1 October 2022



Innovate
UK

Innovation Funding Service (IFS)

Abbie Wood

Search for a funding competition and review criteria

Innovation competitions

Filter competitions

12 competitions

Keywords

Innovation area

Any ▼

Update results

UK-South Korea Collaborative R&D

UK registered businesses can apply for a share of up to £2 million for this competition. This funding is for the purpose of developing innovative proposals with South Korea.

Eligibility

This competition is open to collaborations only. To lead a project your organisation must:

- be a UK registered business of any size
- be or involve at least one grant claiming UK registered [micro, small or medium-sized enterprise \(SME\)](#).
- collaborate with a South Korea registered business, which must be a separate non-linked entity to the UK project partners

Open now

Opened: 14 February 2022

Closes: 6 July 2022

Funding competition

UK-South Korea Collaborative R&D

UK registered businesses can apply for a share of up to £2 million for this competition. This funding is for the purpose of developing innovative proposals with South Korea.

Competition opens: Monday 14 February 2022

Competition closes: Wednesday 6 July 2022 11:00am

Start new application

Or [sign in](#) to continue an existing application.

Summary

Eligibility

Scope

Dates

How to apply

Supporting information

Description

Innovate UK, part of UK Research and Innovation, will invest up to £2 million in innovation projects in partnership with the [Korea Institute for Advancement of Technology \(KIAT\)](#).

The aim of this competition is to fund collaborative research and development (CR&D) projects focused on industrial research. Your proposal must include at least one partner from the UK and one partner from South Korea.

The projects we fund are expected to result in a new product, industrial process or service, be innovative, involve a technological risk, and have high market potential in the participating countries.

Lead Applicant: create an account

The lead applicant must create an account:

- **UK registered businesses**

Use Companies House lookup as it speeds up our checks by providing your company number. You are unable to enter this at a later date.

- **Academics and RTOs**

Enter your information manually so you are not listed as a business on IFS and ensure you receive the correct funding.




GOV.UK Innovation Funding Service

BETA This is a new service – your [feedback](#) will help us to improve it.

[Back](#)

Create your account

Your organisation

 Your organisation must be UK based to receive funding from Innovate UK

Business

Find your organisation on Companies House
Enter your organisation name or registration number

Companies House search results
Select your organisation from the options below

[NOMENSA LTD](#)
04214477 - Incorporated on 10 May 2001
13 Queen Square, Bristol, BS1 4NT

GOV.UK Innovation Funding Service

BETA This is a new service – your [feedback](#) will help us to improve it.

[Back](#)

Please sign in or create an account

Used this service before?
Please sign into your Innovation Funding Service account.

New to this service?
If you haven't used the new Innovation Funding Service before you will need to create an account.

Innovation Funding Service Sign in

Email address
Please enter your email address.

Password
Please enter your password.

[Show](#)

[Need help signing in or creating an account?](#)

My email and/or password isn't working

If you applied previously using the old service, you will need to create a new account.

[Forgotten your password?](#)

Project Details

Application Team - Collaborators can invite organisations who you are working with on the project. Contributors can invite colleagues from your own organisation to help you complete your application

Application Details - Title, timescales

Subsidy basis - Will the project, including any related activities, you want Innovate UK to fund, affect trade between Northern Ireland and the EU? All participants must complete this section.

Equality, Diversity and Inclusion – Complete the survey and tick yes

Project Summary - Short summary and objectives of the project including what is innovative about it

Public Description - Description of your project which will be published if you are successful

Scope - How does your project align with the scope of this competition? - If your project is not in scope, it will be immediately rejected and will not be sent for assessment

Application Questions

Detailed guidance available on IFS

Application form		Appendix?
Question 1	Applicant location (unscored)	No
Question 2	Minimal Financial Assistance declaration (not scored)	Template to complete – mandatory for all funded partners
Question 3	Industry skills requirements and landscape awareness (out of 25)	Yes - optional
Question 4	Approach and deliverables (out of 25)	Yes - optional
Question 5	Project delivery, costs and team (out of 25)	Yes x2 - mandatory
Question 6	Impact, exploitation, continuity planning and added value (out of 25)	No

Minimal Financial Assistance (MFA) declaration form

Declaration statement

I confirm that I **have not** received any funding in the applicable period as defined above. *(Please check the box if applicable and move to Recipient Acknowledgments.)*

☐

or

I confirm that I **have** received the following funding in the applicable period as defined above. *(Please check the box if applicable and complete the table below.)*

☐

A	B	C	D
Body who provided the funding <i>(Who awarded you the funding?)</i>	Funding Amount received in GBP	Funding Amount received in Euros <i>(only use this column to declare your conversion of the De minimis funding you previously received in euros)</i>	Date awarded

DECLARATION:

I believe that the facts stated in this Declaration are true. I understand that legal proceedings for false and inaccurate declarations may be brought against anyone who makes, or causes to be made, a false statement in a document verified by a statement of truth without an honest belief in its truth.

Company	
Applicant Name	
Signature	
Date	

False declarations will result in withdrawal of the offer made by the Authority. If an award is made to you based on false information, the Authority has the right to recover funding in full.



Innovate
UK

Application finances

To claim funding

Your business does not have to be UK registered with Companies House when you apply but it must be registered before you can receive funding.

You are unable to claim funding if:

- you are an overseas organisation, so your company number begins with FC
- your organisation is setup as a branch, so your company number begins with BR
- you are a Crown Dependency:
 - if your company is based in Jersey, your company number begins with JE
 - if your company is based in Guernsey
 - if your company is based in the Isle of Man

British Overseas Territories

You are also unable to claim funding if your company is based in any of the British Overseas Territories (BOTs):

- Anguilla
- Bermuda
- British Antarctic Territory
- British Indian Ocean Territory
- British Virgin Islands
- Cayman Islands
- Falkland Islands
- Gibraltar
- Montserrat
- Pitcairn Islands
- Saint Helena, Ascension and Tristan da Cunha
- South Georgia and the South Sandwich Islands
- Turks and Caicos Islands

Project Costs

Test nuclear application

Your project costs

Provide the project costs for 'Empire Ltd'

Only your organisation can see this level of detail. All members of your organisation can access and edit your project finances. We recommend assigning completion of your project finances to one member of your team.

[Open all](#)

Labour	£50,000 +
Overhead costs	£0 +
Overhead costs	£0 +
Materials	£20,000 +
Capital usage	£0 +
Subcontracting	£100,000 +
Travel and subsistence	£0 +
Other costs	£0 +
'Empire Ltd' Total project costs	£170,000

Labour

Eligible:

- staff working directly on project
- paid by PAYE
- NI, pension, non-discretionary costs

Ineligible:

- dividends
- bonuses
- non productive time
- overtime

Labour

£25,862 —

You can claim the labour costs of all employees you have working on your project.

► [Labour costs guidance](#)

If your application is awarded funding, you will need to account for all your labour costs as they occur. For example, you should keep timesheets and payroll records. These should show the actual hours worked by individuals and paid by the organisation.

Working days per year

Number of staff and roles within the project

Role within project	Gross employee cost	Rate (£/day)	Days to be spent by all staff at this grade	Total costs	
<input type="text" value="Project Manager"/>	<input type="text" value="50000"/>	£216	<input type="text" value="120"/>	£25,862	Remove
<input type="text"/>	<input type="text" value="0"/>	£0	<input type="text" value="0"/>	£0	Remove

[Add another role](#)

Total labour costs **£25,862**

Overheads

Innovate UK's definition

Additional costs and operational expenses incurred directly as a result of the project. These could include additional costs for administrative staff, general IT, rent and utilities

Indirect (administration) overheads

Please ensure they are additional and directly attributable to the delivery of the project

Direct overheads

- e.g. office utilities, IT infrastructure, laptop provision not covered by capital usage
- must be directly attributable to the project
- provide detailed breakdown together with methodology/basis of apportionment

Overhead costs

£ 44,483 ▲

You can incur overhead costs associated with those directly working on the project as well as indirect (administration) overheads. To be eligible both overhead categories need to be directly attributable to the project. The indirect overheads need to be additional as well as directly attributable. Note that there are certain cost categories/activities which are not eligible. To find out which costs are ineligible/eligible refer to our [project costs guidance](#).

► [Overheads costs guidance](#)

- ☐ No overhead costs
- ☒ 20% of labour costs
- ☐ Calculate overheads

Calculate overheads

If you feel your overheads are higher than 20% you may calculate a value using the Innovate UK model in the spreadsheet available below. The model shows you which types of indirect costs associated with your project you may claim. For support with this option, please contact our Customer Support Service on 01793 44 2700. Any value claimed under this model will be subject to a review. This will assess the appropriateness of your claim if your grant application is successful.



Download the overhead calculation spreadsheet

Download as an Excel document [overhead calculation spreadsheet.xlsx \(16KB\)](#)

Download as an Open Office document [overhead calculation spreadsheet.ods \(10KB\)](#)

Upload your completed spreadsheet

No file currently uploaded

+ Upload

Material costs

Please be clear on what the materials are, just putting consumables does not provide enough detail.

If insufficient information is provided, we will request more information should you be successful which may delay your project start date.

Materials£10,000 —

You can claim the costs of materials used on your project providing:

- they are not already purchased or included in the overheads
- they are purchased from third parties
- they won't have a residual/resale value at the end of your project. If they do you can claim the costs minus this value

[Please refer to our guide to project costs for further information.](#)

► [Materials costs guidance](#)

Please provide a breakdown of the materials you expect to use during the project

Item	Quantity	Cost per item (£)	Total	
<input type="text" value="Software"/>	<input type="text" value="1"/>	<input type="text" value="10000"/>	£10,000	Remove
<input type="text"/>	<input type="text" value="0"/>	<input type="text" value="0"/>	£0	Remove

[Add another materials cost](#)

Total materials costs **£10,000**

Capital equipment usage

Eligible:

Used in the project or shared with day-to-day production.

Calculations will need to be in line with your accounting practices.

Even if the equipment is depreciated fully over the life of the project this must be added under capital equipment.

Capital usage	£750 —
You can claim the usage costs of capital assets you will buy for, or use on, your project.	
▶ Capital usage guidance	
Please provide a breakdown of the capital items you will buy and/or use for the project.	
<hr/>	
Item description	
<div>Laptop</div>	
New or existing item	
<input checked="" type="radio"/> New <input type="radio"/> Existing	
Depreciation period (months)	
<div>24</div>	
Net present value at the start of your project or the price you bought it for (£)	
<div>2000</div>	
Residual value at end of project (£)	
<div>500</div>	
Utilisation (%)	
<div>50</div>	
Net cost	
£750	

Subcontractors

Justified and quantified.

If non-UK subcontractors are being used, you will need to provide strong justification on why a UK-based subcontractor is not being used.

If you are subcontracting to a parent or sister company, please ensure you list at cost and do not include profit.

Costs to be justified and appropriate to the total eligible project costs.

You can subcontract work if you don't have the expertise in your project team. You can also subcontract if it is cheaper than developing your skills in-house.

► [Subcontracting costs guidance](#)

Please provide details of any work that you expect to subcontract for your project.

Subcontractor name

Robotics experts ltd

Country where the subcontractor will work

UK

Role of the subcontractor in the project and description of the work they'll do

facilitation and availability of robotics labs

Cost

36795

Travel and subsistence

Eligible:

Costs must be directly linked to the project.

Please breakdown your costs as follows:

- Travel
- Accommodation
- Subsistence

If you have an annual trip to visit the parent company this is not an eligible cost.

Travel and subsistence £ 3,000 ▲

You should include travel and subsistence costs that relate to this project.

Purpose of journey or description of subsistence cost	Number of times	Cost each (£)	Total (£)	
Travel to robotics labs for testing	12	100	£ 1,200	Remove
monthly project meetings	12	150	£ 1,800	Remove

[Add another travel cost](#)

Total travel & subsistence costs £ 3,000

Other costs

Costs that could not be added under previous headings

Do not double count

Patent filing costs for new IP – SMEs **up to £7,500**

Other costs

£ 0 ▲

Please provide details of any project costs which cannot be covered by the other cost categories.

► [Other costs guidance](#)

Please note that legal or project audit and accountancy fees are not eligible and should not be included as an 'other cost'. Patent filing costs of new IP relating to the project are limited to £7,500 for SME applicants only. Please provide estimates of other costs that do not fit within any other cost headings.

Description and justification of the cost

Estimated cost (£)

0

[Add another cost](#)



Innovate
UK

Academic partners

Why Je-S?

We use the Research Councils' **Joint Electronic Submission System (Je-S)** to collect academic finances.

The Je-S system automates the collection of Full Economic Costs (FEC) based costs from academic partners and tells them exactly what numbers should be used in the application form for their costs.

Also to collect project finance details from non-HEIs (e.g. RTOs) that are claiming they are carrying out academic quality work and want to be funded on an FEC basis.

Using Je-S means that Innovate UK follows standard Research Council guidelines on funding universities and enables Research Councils to easily co-fund Innovate UK projects.

The Je-S system is completely separate from Innovate UK and we cannot advise on its usage.

Project costs – academic partners

Enter the TSB reference number here. →

Enter the TSB Contribution column figures from *your* J-eS output document into the project costs section of the application.

Upload the Je-S ‘with council status’ form as a PDF at the bottom of the screen.

Any queries, contact Je-S Helpdesk (not Innovate UK)

- jeshelp@je-s.ukri.org
- 01793 444164

TSB reference This number is found at the top of your Je-S form	
<input type="text" value="My REF"/>	
Financial resources Please enter the following costs from the summary of resources section on your Je-S form	
Directly incurred	TSB Contribution (please refer to the TSB contribution column)
Staff	<input type="text" value="11"/>
Travel & subsistence	<input type="text" value="22"/>
Other costs	<input type="text" value="33"/>
Subtotal	<input type="text" value="£ 66"/>
Directly allocated	
Investigators	<input type="text" value="44"/>
Estates Costs	<input type="text" value="55"/>
Other costs	<input type="text" value="66"/>
Subtotal	<input type="text" value="£ 165"/>
Indirect costs	<input type="text" value="77"/>
Exceptions	
Staff	<input type="text" value="88"/>



Innovate
UK

Submitting your application

Project cost summary

Project cost breakdown								
	Total	Labour	Overhead costs	Materials	Capital usage	Subcontracting costs	Travel and subsistence	Other costs
Barry Shaw Experts Ltd Partner	£230,162	£84,052	£16,810	£90,550	£0	£35,000	£3,750	£0
EMPIRE LTD Lead organisation	£331,442	£222,414	£44,483	£11,750	£13,000	£36,795	£3,000	£0
University of Bath Partner	£19,762	£8,104	£5,731	£412	£0	£0	£504	£5,011
Total	£581,366	£314,570	£67,024	£102,712	£13,000	£71,795	£7,254	£5,011

This is the level of cost detail that the assessors will see during the assessment process.

Ensure the highlighted costs fit the criteria for this competition:

- total project costs must be no more than **£50,000**
- All organisations can see a summary of project costs

Checking your finances are complete

Finances Summary

The following organisations have not marked their finances as complete:

- EMPIRE LTD



[Return to the finances section to complete your finances](#)

This application cannot be submitted unless finances have been marked as complete by all partners.

		Total costs	% Grant	Funding sought	Other public sector funding	Contribution to project
Barry Shaw Experts Ltd Partner	✓	£230,162	70%	£161,113	£0	£69,049
EMPIRE LTD Lead organisation	⚠	£282,655	70%	£197,859	£0	£84,797
University of Bath Partner	✓	£239,114	0%	£0	£0	£239,114
Total		£751,931		£358,972	£0	£392,959

All organisations have marked their finances as complete.

IFS DOES NOT VALIDATE YOUR TOTAL PROJECT COSTS

Editing a submitted application

[test](#)

Application number: 242
Competition: 599 Covid de minimis round 2

Awaiting assessment


Application submitted
[Reopen](#)

Reopen by clicking here

Terms and conditions
You must agree to these before you submit your application.

[Award terms and conditions](#)✓ Complete

Review and submit

 [Print your application](#)

Remember to press
'Submit application'

Terms and conditionsOpen all

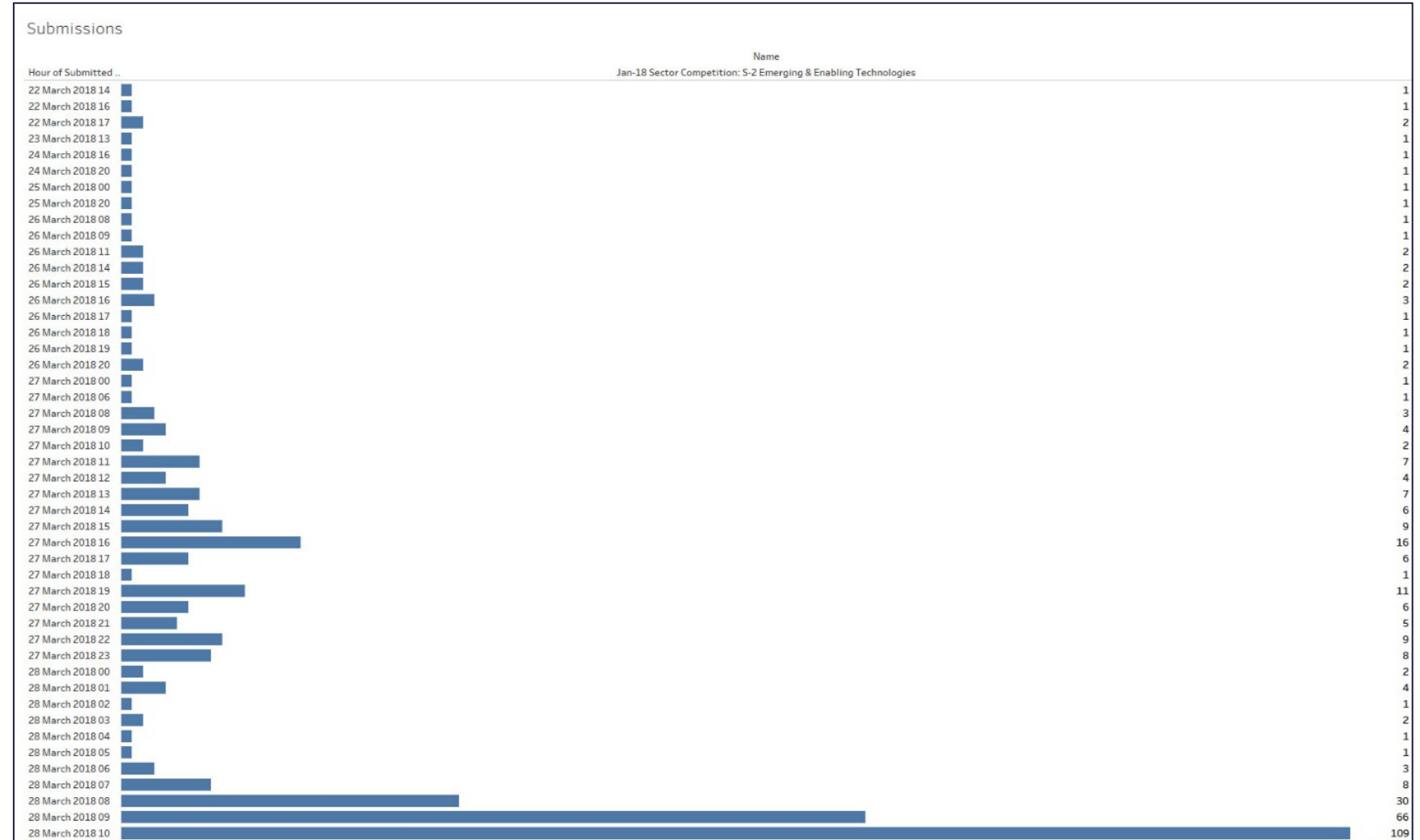
[Award terms and conditions](#)✓ Complete +

Submit application

Need help with this service? [Contact us](#)

Submit your application early!

Customer Support can help resolve any issues you might have when submitting but only if they are contacted before the deadline. Once the deadline has passed, your application cannot be submitted.





Innovate
UK

Assessment

How do our assessors assess?

www.improvementuk.org

0300 301 4357



Improvement
UK



How are successful applications selected for funding?

www.innovateuk.edi.org

0200 311 4457





Innovate
UK

Project setup for successful applicants

Notification

If you are unsuccessful in this competition

You can use the feedback from the assessors to develop your idea and apply into another competition that allows previously submitted applications

If you are successful in this competition

- you will be assigned a Delivery Executive who will guide you through the Project Set Up process
- you will have **7** days to complete the project team, project details and bank details
- you will then have **83** further days to complete project set up – funding may be withdrawn if this is not completed within this timeframe

Please ensure all your contact details in the IFS portal are correct and up to date and that you regularly monitor it.

Project set up

All communication will be through IFS.

Lead applicant must provide collaboration agreements and exploitation plans if applicable.

Any partners with individual total project costs of **up to** £50,000 must provide evidence with a Statement of Expenditure (SoE).

Project delivery

All grants are paid **quarterly** in arrears and are only paid following **quarterly** reporting and necessary audits.

Claims can only be made for costs incurred and paid between the project start and end dates.

Monitoring of the project includes a visit from the appointed Monitoring Officer.



Innovate
UK

Competition Process **Q&A**

Sven Knowles asking Abbie Wood

Innovate UK KTN

Driving the Electric Revolution: Building Talent for the Future 2 How We Support Organisations

9 March 2022

Dr Sven Knowles

KTM – Electronic Systems

sven.knowles@ktn-uk.org

www.ktn-uk.org



Innovate
UK





Innovate UK KTN Connecting for Positive Change

Innovate UK KTN exists to connect **innovators** with new **partners** and new **opportunities** beyond their existing thinking - accelerating ambitious ideas into real-world **solutions**

Innovate UK KTN connects ideas, people and communities to **drive innovation that changes lives**



Innovate
UK



Innovate UK KTN and Driving the Electric Revolution

- Signpost companies to identify and address funding
- Provide deep expertise to make Connections and Networks
- Drive powerful connections with businesses
- Assist companies in forming partnerships/collaborations/projects
- Advise companies in their submission
 - Light touch reviews
 - Guidance documents, eg Good Application Guide
 - Highlight key features of a good proposal
 - Provide recommendations, eg proposals that excites and inspires
- Create collaboration mechanisms, events, and Webinars including 'Engage With...'



Innovate
UK



Innovate UK funding portal

- <https://apply-for-innovation-funding.service.gov.uk/competition/search>

TA This is a new service – your [feedback](#) will help us to improve it.

Innovate UK

Innovation competitions

er competitions

1 competition

words

lls

novation area

ny

update results

[Driving the Electric Revolution – PEMD Skills Hub](#)

UK registered organisations can apply for up to £1 million from Driving the electric revolution for the development of a Power Electronics, Machines Drives skills hub.

Eligibility

This competition is open to single applicants and collaborations. To lead project your organisation must be a UK registered:

- business of any size
- research organisation
- research and technology organisation (RTO)
- academic institution
- charity
- not-for-profit
- public sector organisation

Open now

Opened: 15 November 2021

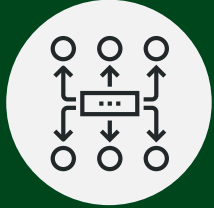
Closes: 15 December 2021



Innovate
UK



What Innovate UK KTN do – Growth Through Innovation



Connecting

Finding valuable partners

Project consortium building

Supply Chain Knowledge

Driving new connections

Articulating challenges

Finding creative solutions



Funding

Awareness and dissemination

Public and private finance

Advice – project scope

Advice – proposal mentoring

Project - follow-up



Influencing

Promoting

Industry needs

Informing policy makers

Informing strategy

Communicating trends and market drivers

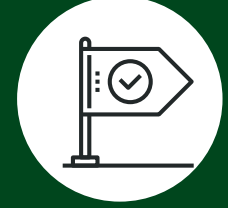


Supporting

Intelligence on trends and markets

Business Planning support

Success stories / raising profile



Navigating

Navigating the innovation support landscape

Promoting coherent strategy and approach

Engaging wider stakeholders

Curation of innovation resources



Innovate
UK



Innovate UK KTN Offer

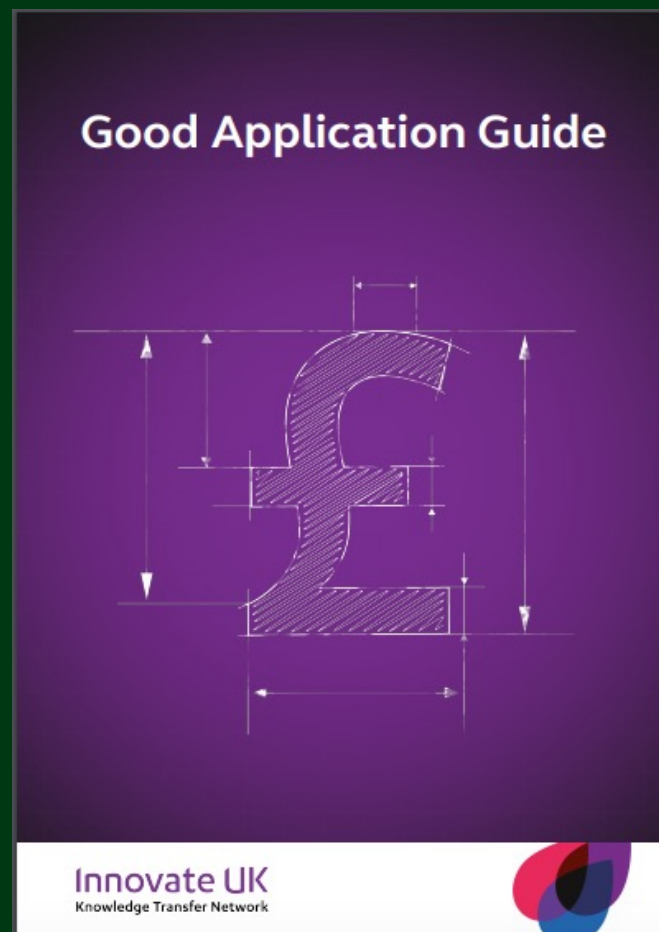
- Signpost companies to identify and address funding
- Provide deep expertise to make Connections and Networks
- Drive powerful connections with businesses
- Assist companies in forming partnerships/collaborations/projects
- Advise companies in their submission
 - Light touch reviews
 - Guidance documents (eg Good Application Guide) that
 - Highlights key features of a good proposal
 - Provide recommendations, eg write a proposal that excites and inspires
 - www.ktn-uk.org/news/the-good-application-guide-and-more-grant-application-advice-from-ktn/



Innovate
UK



Top tips on a good application



<https://ktn-uk.org/news/the-good-application-guide-and-more-grant-application-advice-from-ktn/>



Innovate
UK



Engage With...



Developing and delivering graphene electronic devices at commercial quality and scale, starting with a graphene Hall effect sensor

Dr. Ellie Galaris – Product Owner, Graphene Hall Sensors
Dr. Ivor Gulney – Technical Director

Thursday 4th February 2021, 15:00



TURBO POWER SYSTEMS
Powering Intelligent Solutions

Engage with....
Turbo Power Systems

Driving Electric Revolution (DER) Webinar
6th August 2020



Engage with ZF

25th June 2020

Dr David Moule, Technical Specialist – Electric Drives
Phil Langley, Strategic and Business Development
Dr Cornel Williams, Sre Engineering Manager



Engaging a Diverse
Workforce for the Future
27th of August, 3PM

Join the discussion on how our community can reverse the decline in engineers, with the Driving the Electric Revolution team and guest host Jacqui Murray, Deputy Director of the Faraday Battery Challenge.

Be part of the conversation to help us all harness the power of future engineers.



Driving the Electric
Revolution
Engage with Romax Technology

23 July 2020



Siemens | DER Webinar
Digital Industries | Motion Control
Iran Agre & Ian Daniels

Unpublished © Siemens PLC 2020



Driving Electric Revolution Engage with... webinar series
June 5, 2020

Power GaN FETs

Michael LeGoff, GM GaN Product Group
Dr. Jim Hennessy, Director, GaN Applications
Dr. Eldred Chowdhury, Director, GaN Strategic



19 January 2021



UK and Mining's Critical
Role in achieving Net Zero

Drang Gopal
drang.gopal@dti.gov.uk
19 November 2020



Ric Allott – Director of Business Development, Space, Technology and Facilities
Luke Mason – High-Performance Software Engineering Group Leader, Matrios Centre
Graham Appleby – Business Development Manager, ISS Neutron and Muon Source



Power Electronics applications in Electricity Networks



James Yu - Future Networks Manager
James.Yu@spenergy.co.uk



Ali Kazeroni - Lead Engineer
akazeroni@spenergy.co.uk



Rolls-Royce

KTN Engage with...
PEMD and the Aerospace Gas Turbine

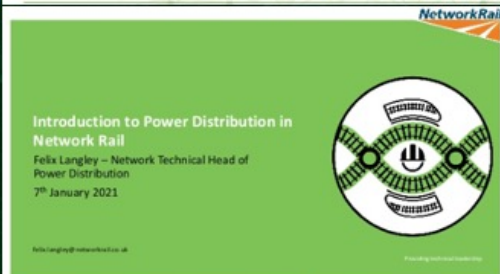
Graham Bruce - Electronics Specialist - Rolls-Royce Control Systems (g.bruce@rolls-royce.com)
Mark Hubbard - Lead Engineer Electrical Systems and Technologies - Rolls-Royce Electrical
Jeff Hilday - Chief Product Engineer - Rolls-Royce Control Systems
19 May 2020

Rolls-Royce is a global leader in the design, development, manufacture and support of gas turbine engines for the aerospace and power generation sectors. We are currently looking for experienced engineers to join our team in the UK.



The First Practical Zero Emission Aviation Powertrain

KTN ENGAGE
Julian Renz - Head of Programmes - julian.renz@zeroavia.com
12 November 2020
www.zeroavia.com



Introduction to Power Distribution in
Network Rail

Felix Langley - Network Technical Head of
Power Distribution
7th January 2021

felix.langley@networkrail.co.uk



British Glass

Engage with British Glass

Dave Dalton, Chief Executive

www.britglass.co.uk

AGRI-ROBOTICS

Simon Pearson
The University of Lincoln

Coronavirus accelerates the rise of the robot
harvester

Labour shortage gives new urgency to development of smart fruit and vegetable pickers



Agri-robotics is a rapidly growing sector within the UK's agri-food sector. It is a key area of research and development for the UK's agri-food sector.



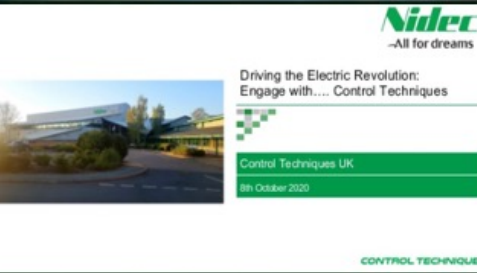
Engage with...Round Table on
Simulation Versus Prototyping

Join this ISCF Driving the Electric Revolution round table debate and explore if we should still be doing expensive prototypes or instead should be using modelling and simulation.

Will Drury - Chair
Iain Mosely - Electronic Minds
Hannah Ansell - Ricardo UK Ltd
Sarah Munday - JIP Power
Steve Gascoigne - Mentor Graphics
Jonathan Smith - STFC
Nadir Ince - GE



-All for dreams



Driving the Electric Revolution:
Engage with... Control Techniques

Control Techniques UK
8th October 2020

CONTROL TECHNIQUES



Micro-Mobility Innovation
Pure Electric

CREATING UK DESIGN, DEVELOPMENT
AND MANUFACTURING OPPORTUNITIES
IMPROVING AIR QUALITY IN UK TOWNS
AND CITIES
BOOSTING UK EXPORTS



—Engineering Better Outcomes—

Introduction to Belcan

A Global Network of Experts Delivering
Supply Chain Solutions



Dr Steve Singlay (Director - Automotive)
Dave Parkinson (Head of Electrification)
Date: 30.07.20

Engage with Ricardo

Overview of Ricardo developments in
electrification and PEMD for UKRI

4th June 2020

© Ricardo 2020

COMPOUND
SEMICONDUCTOR
APPLICATIONS
CATAPULT

CATAPULT
Compound Semiconductor Applications

Virtual Product Development for Power Electronics
11th June 2020

Dr Alastair McGibbon
Head of Collaborative R&D

Dr Ingo Lütke
Head of Power Electronics





UK Research
and Innovation

Engage with...LIVE!

Tuesday 29 March | 9:00 – 17:30
The Octagon Centre, Sheffield



Innovate
UK

ktn



Thank You

- Driving the Electric Revolution Landing pages

www.ktn-uk.org/electronics/der-iscf-challenge/

www.ukri.org/our-work/our-main-funds/industrial-strategy-challenge-fund/future-of-mobility/driving-the-electric-revolution-challenge/

<https://ktn-uk.org/opportunities/driving-the-electric-revolution-building-talent-for-the-future-2/>

- View previous and register for upcoming 'Engage With...' webinars

www.ktn-uk.org/news/driving-the-electric-revolution-webinar-series/

- Driving the Electric Revolution Challenge newsletter

info.ktn-uk.org/p/2VFU-7JI/driving-the-electric-revolution-sign-up/

- Innovate UK KTN connects ideas, people and communities to drive innovation

sven.knowles@ktn-uk.org

paul.huggett@ktn-uk.org



Innovate
UK



Summary: BTFTF2

- Two strands
 - the full stage competition (for projects £50K to £1M) following on from a successful Expression of Interest application and is by invitation only.
 - **this briefing** is for projects with costs up to £50K, open to any eligible participant
- Up to £4,500,000 available for a portfolio of projects across both strands to address the PEMD skills requirements
- Can be led by any UK registered organisation
- Within this strand projects can be funded for up to 12 months (i.e. for projects up to £50K)
- Any funded project will be expected to have an ongoing legacy to support the skills requirements

Contact

Customer Support Services

0300 321 4357 (Monday - Friday 9:00am - 11:30am and 2:00pm - 4:30pm)

support@iuk.ukri.org

Innovate UK EDGE

<https://www.innovateukedge.ukri.org/>

Innovate UK KTN (Knowledge Transfer Network)

www.ktn-uk.co.uk

Innovate UK

<https://www.gov.uk/government/organisations/innovate-uk>