



Innovate  
UK

Business  
Connect

## **Boost Your Micromobility Growth with Horizon Europe**

4th June 2026



**Sophie Randall**  
**Innovation Lead Mobility and Cities, Innovate UK**  
[Sophie.randall@iuk.ukri.org](mailto:Sophie.randall@iuk.ukri.org)



Innovate  
UK

Business  
Connect

# Agenda

- Housekeeping
- EU funding calls
- Q&A
- Panel: Accessing EU funding
- Q&A
- Event closure



# Housekeeping

- This webinar is being recorded
- Please submit your questions at any time in the “Q&A” chat
- For any technical issues, please contact Jo Byron
- The recording and slides of this webinar will be available on the Innovate UK Business Connect event page
- Please complete the survey that will be sent to you after the webinar



Innovate  
UK

Business  
Connect

# EU Funding calls



**Hazel Dalgård**  
**UK National Contact Point for**  
**the New European Bauhaus,**  
**UKRI**



**Cinzia Porcedda**  
**Horizon Europe National Contact**  
**Point and Global Lead for Climate**  
**Innovate UK**



**Maria Marrugat**  
**Community Leader New European Bauhaus,**  
**European Institute of Innovation and Technology.**



Innovate  
UK

Business  
Connect



UK Research  
and Innovation

OFFICIAL

# Mission Cities and NEB – micromobility opportunities

# UK NCPs for Mission Cities & New European Bauhaus

**Cinzia** – [ncp-climate@iuk.ukri.org](mailto:ncp-climate@iuk.ukri.org)



**Hazel** - [ncp-bauhaus@ukro.ac.uk](mailto:ncp-bauhaus@ukro.ac.uk)



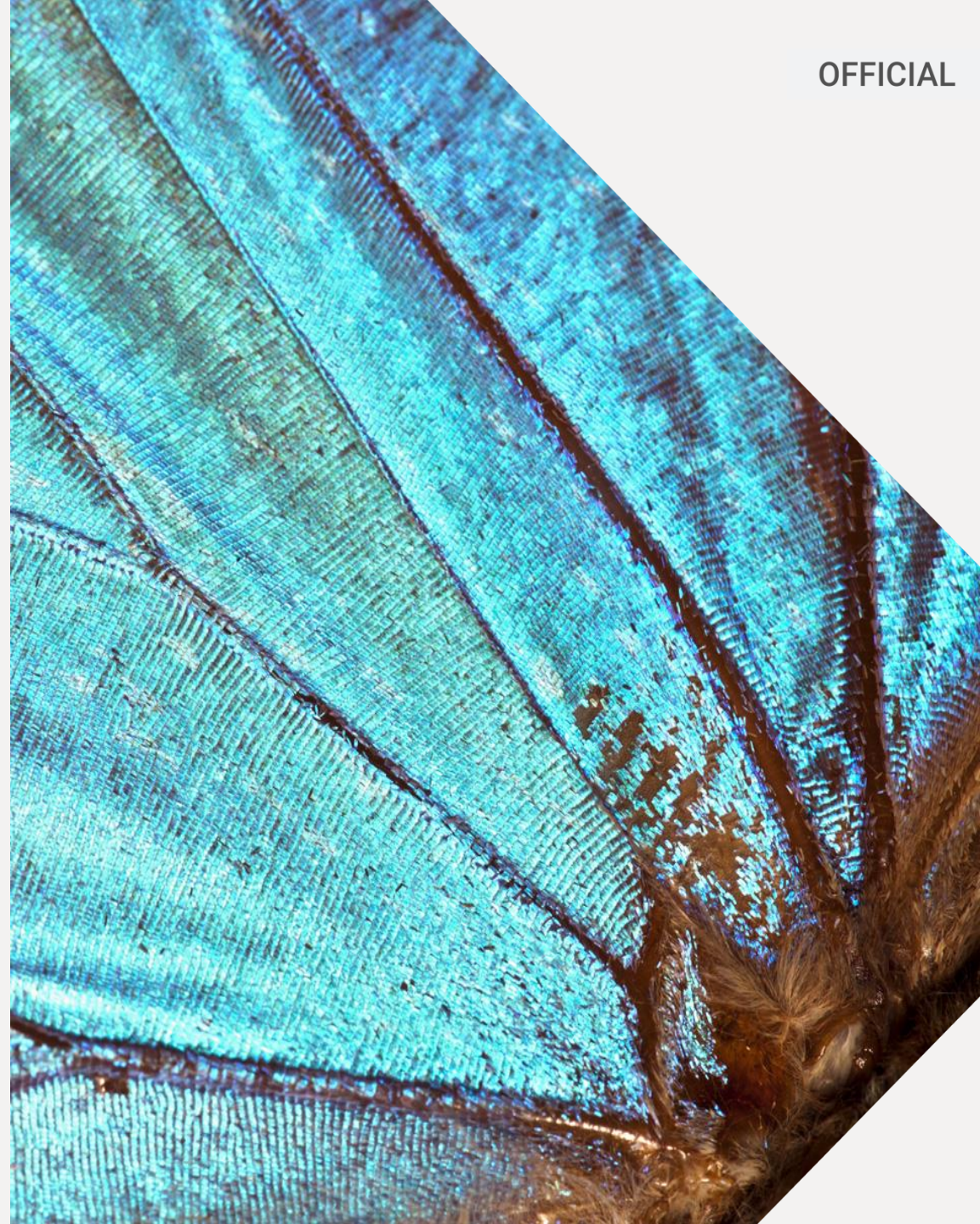
# Agenda

**1 Horizon Europe – UK context**

**2 NEB opportunities**

**3 Adaptation to climate change opportunities**

**4 Mission cities opportunities**



# National Contact Points

UK NEB NCP site including news & funding opportunities.



UK NCP mobility: [ncp-mobility@iuk.ukri.org](mailto:ncp-mobility@iuk.ukri.org)

National Contact Point contact details inc missions:



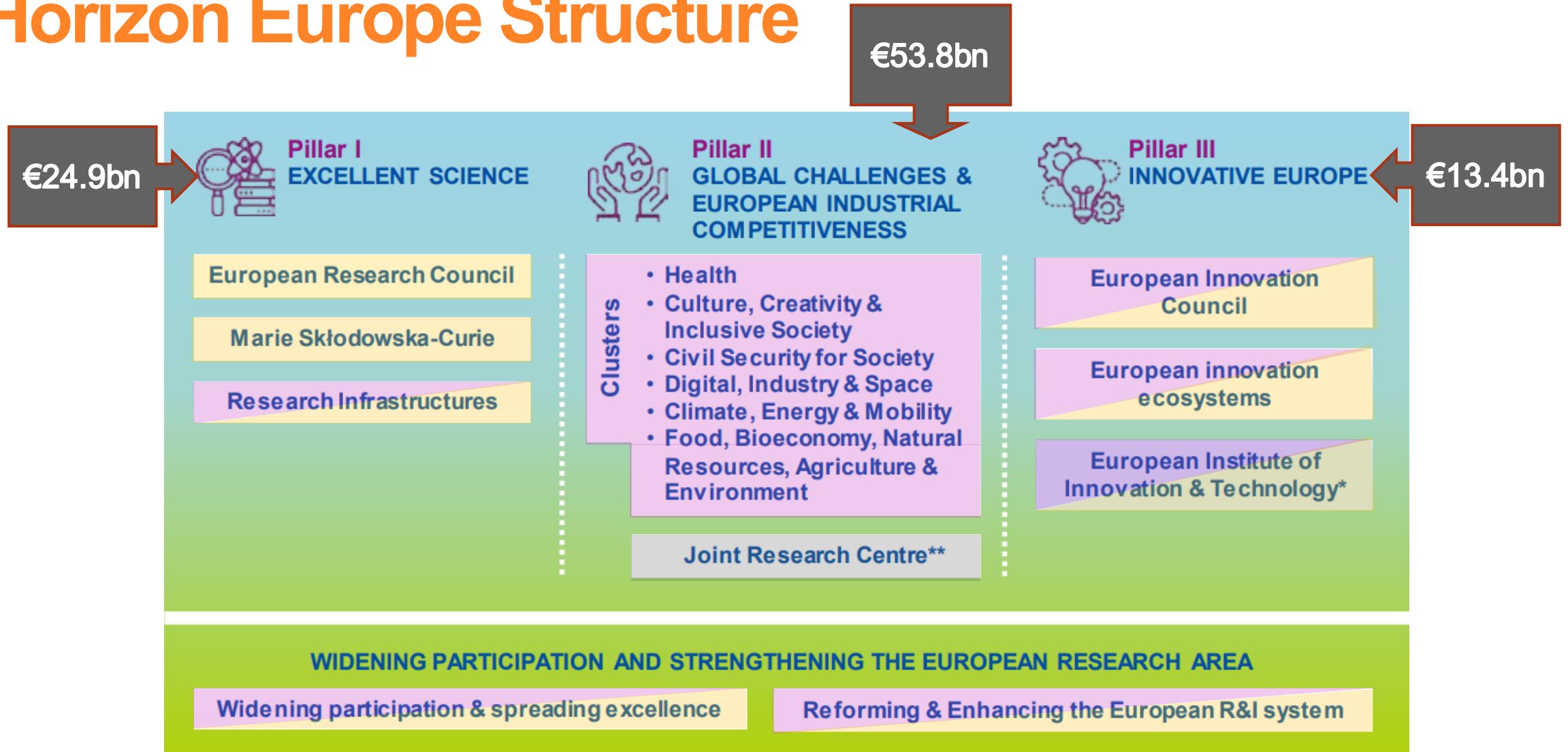
National Contact Point Newsletters

**Horizon Europe Pillar II Cluster Key:**

Cluster 1: Health
Cluster 2: Culture, Creativity and Inclusive Society
Cluster 3: Civil Security For Society
Cluster 4: Digital, Industry and Space
Cluster 5: Climate, Energy and Mobility
Cluster 6: Food security, Bioeconomy, Natural Resources, Agriculture and Environment



# Horizon Europe Structure



2026-2027 Work Programmes, plus 2026 ERC and 2026 EIC Work Programmes (Budgets shown are for 2021-2027, excluding Associated Country contributions)

**Key:**

Open to all research and innovation fields

Challenge driven – must solve the problem posed – not bottom-up idea driven

# What does UK association mean?

- The UK is associated to Horizon Europe for calls in 2024 - 2027 Work Programmes
- UK participants can **fully participate** and be funded directly by the EC\*\*
- UK organisations can **lead** and **coordinate** projects
- For **collaborative projects (consortia)** eligibility requires a **minimum of 3 legal entities** from **different Member States or Associated Countries, one must be from a Member State.**

*\*\*Exceptions:*

*The European Innovation Council (EIC) Fund which manages the equity element of both the EIC Accelerator and STEP*

*If a particular call for proposals is limited in the Work Programme to EU Member States or certain other countries only*

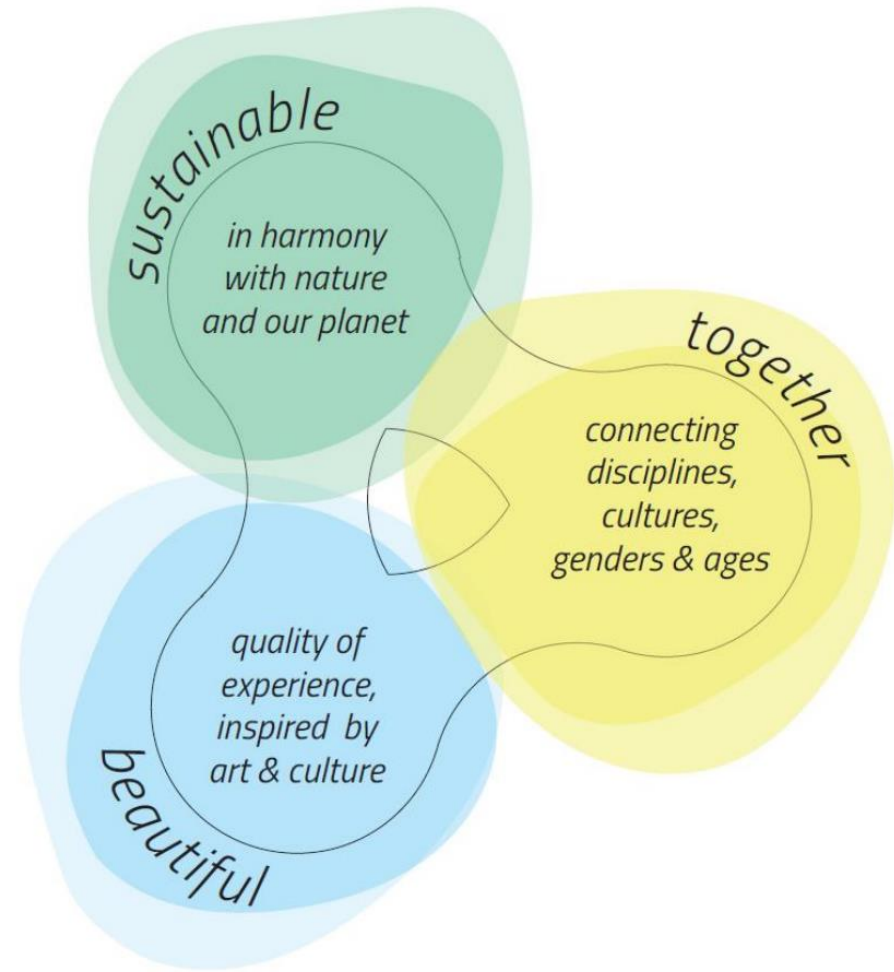


# New European Bauhaus

# Horizon Europe NEB Destinations

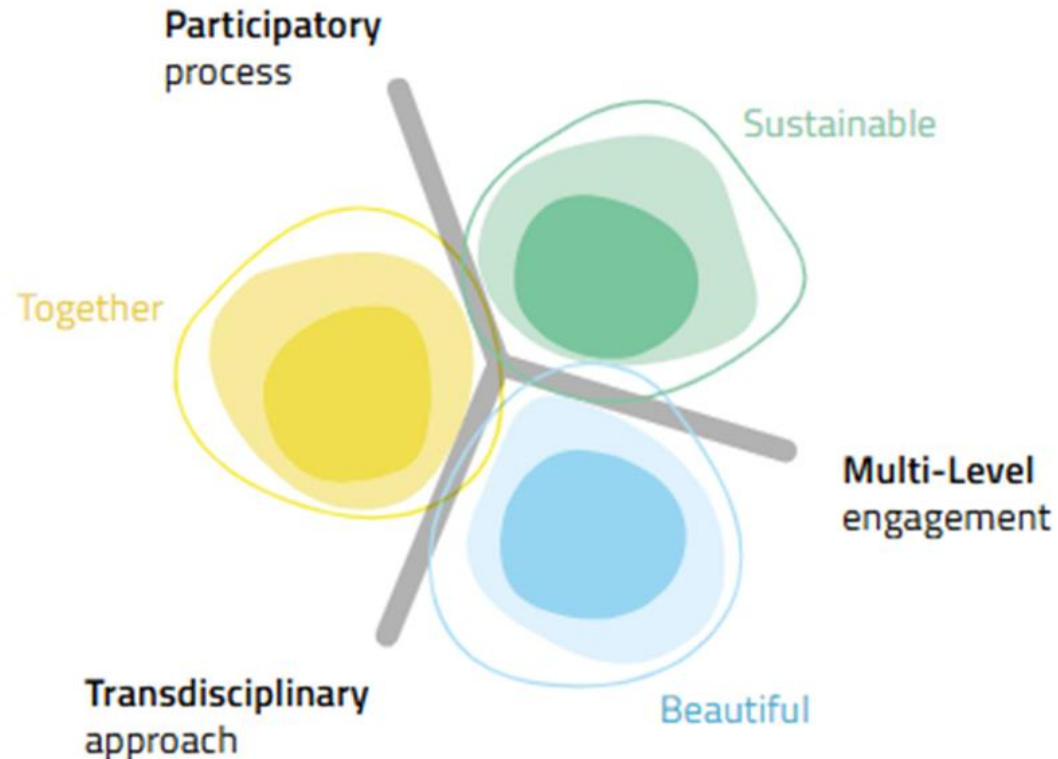
Three **R&I destinations (broad topics):**

1. Connecting the green transformation, **social inclusion and local democracy**
2. **Circular and regenerative approaches** for the **built environment**
3. **Innovative funding** and **new business models** for the transformation of neighbourhoods



**NEB expanded compass values**

## NEB compass (values)



## NEB working principles

- **NEB core values:** The commitment and the support of innovative solutions are rooted in the **three intertwined NEB values sustainable, inclusive and beautiful.**
- **NEB working principles** describe **the process through which a project should operate** and work to achieve the highest level of ambition in the three core values.
- A NEB project should embrace three working principles: **participatory process, multi-level engagement and transdisciplinary approach.**

## D2 calls - Circular and regenerative approaches for the built environment

<b>HORIZON-NEB-2026-01-REGEN-02</b>	<b>Advancing sustainable maintenance and repair measures for existing buildings</b>  Potential opportunity to <b>integrate new mobility-supporting systems</b> e.g. charging points, secure parking and storage, access routes, ramps, and docking systems, integration with building entrances and circulation spaces??	<b>Innovation Action</b>  (TRL 6-8)	2 projects,  c. EUR 5m each	LSF
<b>HORIZON-NEB-2026-01-REGEN-03</b>	<b>Innovative solutions for the sustainable and beautiful use of vertical space</b>  The call emphasises: “ <b>new uses of vertical surfaces</b> ”, “ <b>reimagining façades, walls, and building envelopes</b> ”, “solutions that enhance public space and urban quality”, “ <b>streetscapes</b> ”, “ <b>interfaces between buildings and streets</b> ”, “urban regeneration and liveability”, “sustainable urban transformation”, “ <b>reduced environmental impact</b> ”, “ <b>new models of mobility and accessibility</b> .”	<b>Innovation Action</b>  (TRL 6-8)	3 projects,  c. EUR 5m each	LSF

## D2 calls - Circular and regenerative approaches for the built environment

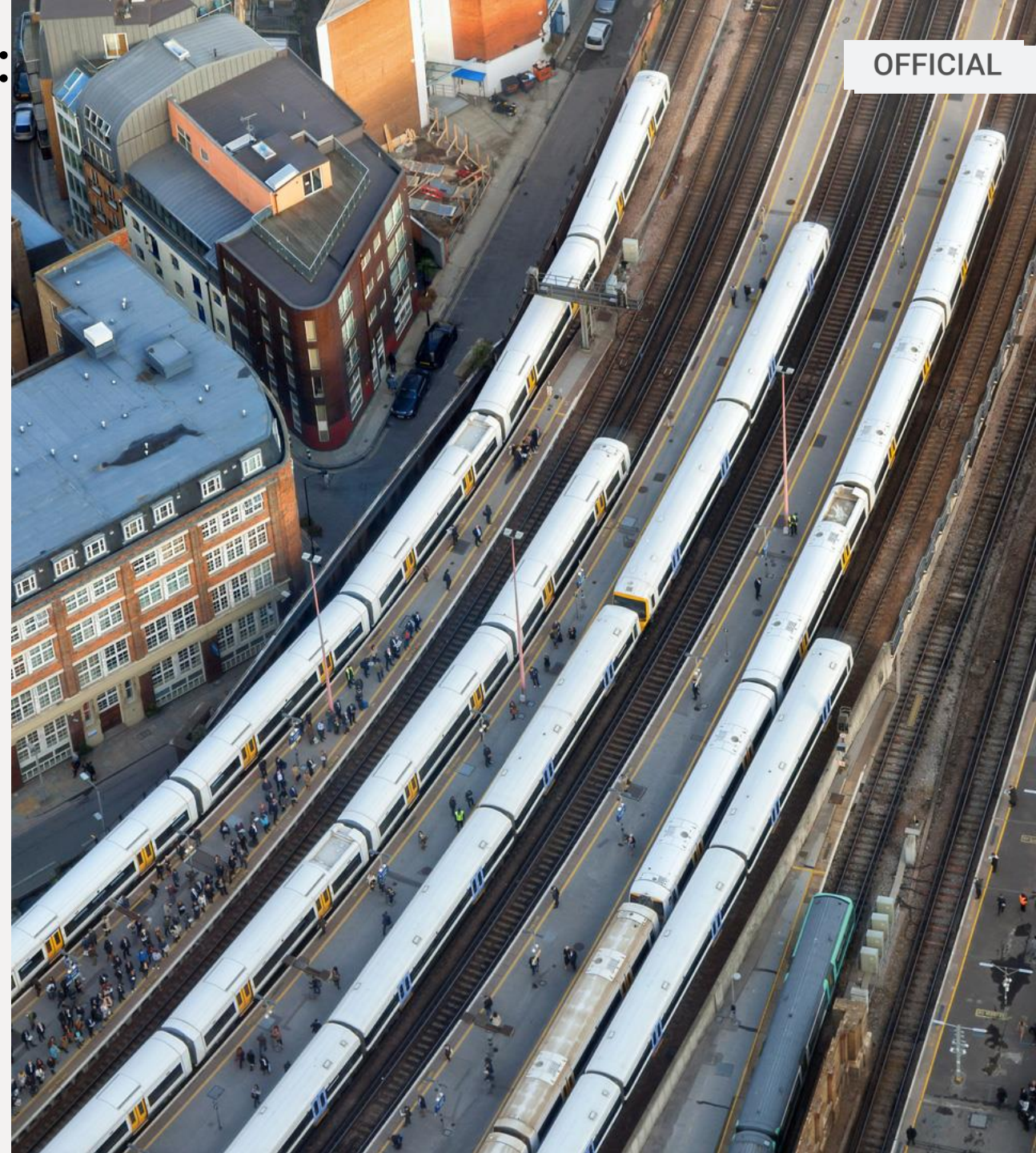
<b>HORIZON-NEB-2027-01-REGEN-01</b>	<p>Combining <b>conventional and innovative construction materials, products and techniques</b> for sustainable and beautiful buildings</p> <p>A new type of multifunctional building component using innovative materials and techniques??</p>	<b>Research &amp; Innovation Action</b>  (TRL 4-5)	3 projects,  c. EUR 4m each	LSF
<b>HORIZON-NEB-2027-01-REGEN-02</b>	<p><b>Sustainable, beautiful and healthy construction and renovation sites</b></p> <p><b>Low impact, low emission construction logistics</b>, inc. worker mobility, site access, and reducing heavy-vehicle impacts. <b>Minimising disruption (noise/pollution)</b> to surrounding communities close to sites.</p>	<b>Research &amp; Innovation Action</b>  (TRL 4-5)	2 projects,  c. EUR 4m each	LSF
<b>HORIZON-NEB-2027-01-REGEN-03</b>	<p><b>Revitalising neighbourhoods around existing railway and motorway corridors</b> <b>(See next slide)</b></p>	<b>Innovation Action</b>  (TRL 6-8)	2 projects,  c. EUR 5.5m each	FSTP

# HORIZON-NEB-2027-01-REGEN-03: Innovation Action: Revitalizing neighbourhoods around existing railway and motorway corridors

**Outcomes** • More attractive living spaces adjacent with measurable improvements in sustainability, biodiversity, inclusiveness and aesthetics. • Lower impacts of the inconveniences caused by railway lines and motorways on inhabitants of spaces adjacent. • Demonstrated solutions and database of design projects to mitigate the negative impacts available to local authorities, inhabitants, architects, engineers, landscape architects, urban planners.

**Expected to** - develop mitigation solutions (for adjacent neighbourhoods) demonstrated in different neighbourhoods **urban, peri-urban and rural areas** located in **different Member States or Associated Countries**.

**Could incl. cycling/pedestrian access.**



## D1- calls - Connecting the green transformation, social inclusion and local democracy

<b>HORIZON-NEB-2026-01-PARTICIPATION-02:</b>	<p><b>Innovative approaches for the spatial design of neighbourhoods</b></p> <p>Assess how <b>spatial design determines gendered, age-appropriate and identity-related patterns of use (e.g. in terms of mobility, safety, sense of security and access to public and private spaces)</b> and how inclusive approaches and accessibility can address diverse needs and experiences of users and the community.</p>	<b>Innovation Action</b>	2 projects  c. EUR 5m each	LSF
<b>HORIZON-NEB-2026-01-PARTICIPATION-03</b>	<p>Understanding <b>inhabitants' experiences of neighbourhoods to support their health and well being</b></p> <p>Angles around perceived safety, accessibility, wellbeing, and active mobility??</p>	<b>Research &amp; Innovation Action</b>	3 projects c. EUR 5m each	LSF
<b>HORIZON-NEB-2027-01-PARTICIPATION-02</b>	<p><b>Intergenerational neighbourhoods and communities</b> aligned with the New European Bauhaus - Ways in which different generations circulate and interact also going to fairness, equality. The demonstrated solutions make a significant contribution to intergenerational living and measurably advance the green transition in the neighbourhoods (<b>for example in the field of sustainable mobility, accessibility, climate-resilience, water resilience, and/or biodiversity conservation</b>).</p>	<b>Innovation Action</b>	2 projects,  c. EUR 5.25m each	LSF

<b>D3 - calls - Innovative funding and new business models for the transformation of neighbourhoods</b>				
<b>HORIZON-NEB-2026-01-BUSINESS-03:</b>	<b>Approaches to reuse vacant, obsolete or underutilised spaces</b> BMs for the built environment. But context- specific or sensitive??	<b>Research &amp; Innovation Action</b>	2 projects, c. EUR 4.5m each	LSF
<b>HORIZON-NEB-2027-01-BUSINESS-03:</b>	<b>Anticipating neighbourhoods of the future</b> in line with the New European Bauhaus  Position micromobility as a NEB-aligned service for more sustainable, inclusive buildings and spaces.	<b>Research &amp; Innovation Action</b>	2 projects, c. EUR 3.5m	LSF

**Destination 3 calls focus on:**

- **Business models**
- **value chains**
- **partnerships**
- **scaling solutions**
- **cross-sector innovation**
- **market uptake.**

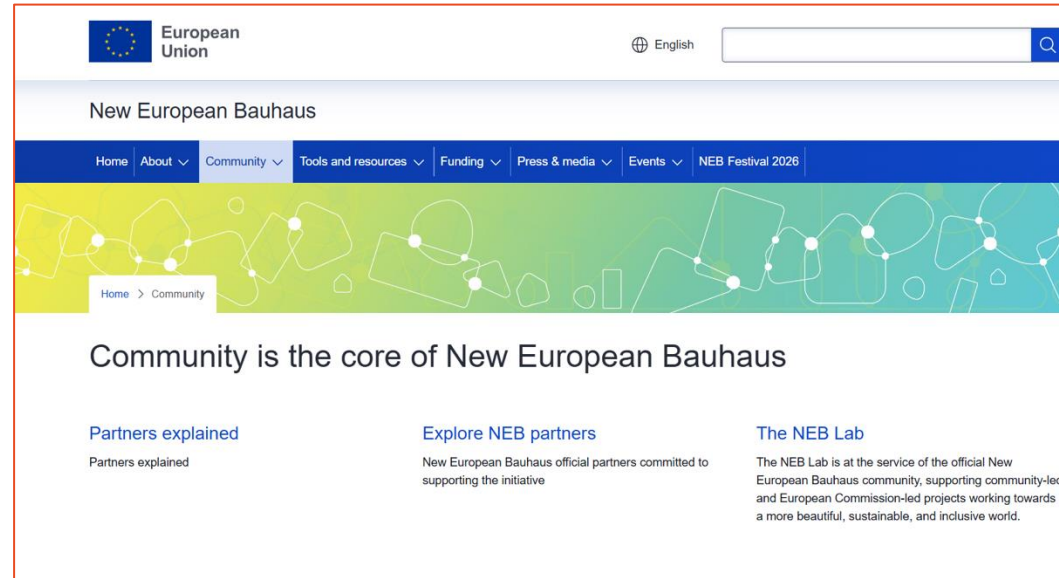
HORIZON-MISS-2027-07-  
CLIMA-CIT-NEB-01: **Urban  
nature: supporting  
restoration of urban  
ecosystems, along urban  
transport networks and in the  
built environment.**

*"The following **additional eligibility criteria** apply: Entities from **at least four cities**, each from a different Member State or Associated Country, **must** participate as beneficiaries. **At least one** of the four cities must be one of the **112 cities** selected for the EU Mission on Climate-neutral and Smart Cities and **at least one** must be a signatory to the **Adaptation Mission Charter.**"*

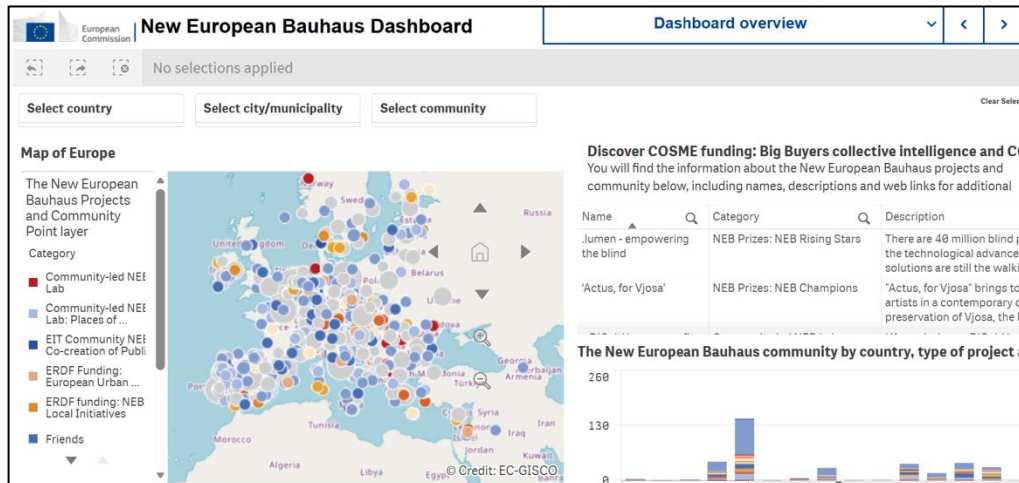


# NEB – EC & UK websites– contact building, resources

[NEB website](#)



## [NEB Festival 2026 – Programme](#)



- **EC INFO: NEB Facility (“Info Days”) webinar – 24 02 26 – Horizon Europe calls - [NEB Facility 2026 Info Days](#)**
- **EC’s ONLINE COMMUNITY: Consortia building and NEB project design tools. [NEB Community](#)**
- **EC’s CONSORTIA BUILDING PLATFORM – 2026 NEB HEu calls - [Home | NEB Facility matchmaking 2026](#)**
- **UK’s [NEBINar 2026](#) and [resources](#)**

# Horizon Europe: Adaptation to Climate Change and Smart Cities EU Missions

[Cinzia.Porcedda@iuk.ukri.org](mailto:Cinzia.Porcedda@iuk.ukri.org)





## **Adaptation to Climate EU Mission : This Mission aims to accompany **at least 150 regions / communities to climate resilience by 2030.****

- ❖ From knowledge to implementation / scaling
- ❖ Stronger alignment with EU policy instruments
- ❖ Multi-scale, multi-stakeholder focus
- ❖ Monitoring, metrics and learning
- ❖ Applied decision-support & tools  
Climate Change and Smart Cities EU Missions



**Innovate  
UK**

# Adaptation to Climate Change EU Mission WP26/27

Topic Number	Topic Name	Opening Date	Closing Date	Type of Action	Number of Projects	EU grant per project
HORIZON-MISS-2026-01-CLIMA-05	Demonstrating solutions to protect and preserve cultural heritage from the impacts of climate change	4 Feb 2026	23 Sept 2026	IA	3	Around €7m
HORIZON-MISS-2026-01-CLIMA-06	Improving climate resilience of navigable inland waterways, their surroundings and related water infrastructure	4 Feb 2026	23 Sept 2026	RIA	2	Around €6m

Topic Number	Topic Name	Opening Date	Closing Date	Type of Action	Number of Projects	EU grant per project
HORIZON-MISS-2027-07-CLIMA-CIT-NEB-01	Urban nature: supporting restoration of urban ecosystems, along urban transport networks and in the built environment	9 Feb 2027	21 Sept 2027	IA	4	Around €10m

## What is the Commission looking for?

- ▶ Demonstration of urban greening and tree-canopy solutions
- ▶ Nature-based solutions integrated into transport corridors and urban spaces
- ▶ Improved climate resilience, biodiversity and quality of life
- ▶ Strong citizen and stakeholder engagement in urban transformation

## Why it matters for Micromobility

- ✓ Greening cycling and micromobility corridors
- ✓ Integrating active mobility with climate adaptation measures
- ✓ Creating more attractive, comfortable and safer public spaces
- ✓ Generating evidence on health, environmental and social benefits of active travel

## Hidden Opportunity

This is not a mobility call—it is an urban nature and climate resilience call.

Micromobility stakeholders can contribute through the design, testing and evaluation of green mobility corridors that combine active travel, biodiversity, cooling and public realm improvements.



## **Climate Neutral and Smart cities: Delivering 100 climate-neutral and smart cities by 2030 and ensuring they act as experimentation and innovation hubs so that all European cities follow suit by 2050.**

- ❖ Ensure that these cities act as experimentation and innovation hubs to enable all European cities to follow suit by 2050
- ❖ Continued focus on the 100+ cities as living labs
- ❖ Cross-mission & cross-programme integration
- ❖ Deployment, governance & citizen engagement
- ❖ Larger, demonstrator-style grants
- ❖ Digital/technical tools for cities



**Innovate  
UK**

# Climate Neutral and Smart Cities Mission – WP26/27

	Topic Name	Opening Date	Closing Date	Type of Action	Number of Projects	
HORIZON-MISS-2026-04-CIT-01	Energy efficient urban and sub-urban public transport, complemented by shared mobility	4 Feb 2026	08 Oct 2026	IA	2	Around €10m
HORIZON-MISS-2027-04-CIT-03	Inclusive and climate resilient multimodal passenger hubs enhancing modal shift towards sustainable transport and shared mobility	<b>09 Feb 2027</b>	07 Oct 2027	IA	2	Around €9m
HORIZON-MISS-2027-04-CIT-CCRI-04	Advancing circular logistics solutions in cities	09 Feb 2027	07 Oct 2027	IA	3	Around €7.50m
HORIZON-MISS-2027-04-CIT-05	Boosting the transformation towards climate-neutral cities, the net-zero economy and open strategic autonomy through Pre-Commercial Procurement (PCP)	09 Feb 2027	07 Oct 2027	PCP	3	€7m to €12

## What is the Commission looking for?

- ▶ Demonstration of integrated public transport and shared mobility ecosystems
- ▶ Solutions improving energy efficiency and attractiveness of urban mobility
- ▶ Better multimodal connections between mass transit and first/last-mile services
- ▶ Replicable city-scale solutions supporting climate neutrality goals

## Why it matters for Micromobility

- ✓ Micromobility is explicitly recognised as a complement to public transport
- ✓ Strong focus on first/last-mile connectivity
- ✓ Opportunity to demonstrate integration with MaaS, digital platforms and multimodal ticketing
- ✓ Potential role for shared bikes, e-bikes, e-scooters and demand-responsive mobility in peri-urban and underserved areas
- ✓ Cities are looking for scalable operational and business models, not just technology pilots

## Hidden Opportunity: This is not a "micromobility call" – it is a city transformation call.

- ▶ Successful proposals will likely position micromobility as an enabler of: modal shift, public transport attractiveness, decarbonisation, social inclusion, and climate-neutral urban planning.

## What is the Commission looking for?

- ▶ Integrated multimodal passenger hubs
- ▶ Better connections between transport modes
- ▶ Increased modal shift towards sustainable transport
- ▶ Inclusive, accessible and climate-resilient mobility solutions

## Why it matters for Micromobility

- ✓ Shared mobility is explicitly referenced in the call
- ✓ Strong first/last-mile integration opportunity
- ✓ Micromobility can improve accessibility to transport hubs
- ✓ Potential for MaaS, integrated ticketing and mobility data solutions
- ✓ Demonstration opportunities in cities seeking to reduce car dependency

**Hidden Opportunity: This is not about building stations—it is about enabling seamless journeys.**

Micromobility providers can position themselves as key partners in delivering: modal shift, accessibility, transport inclusion and climate-resilient urban mobility systems.

# Where micromobility fits (even when not explicit)

Micromobility is rarely the headline - but often part of the solution, adding value on:

- ▶ Resilient first/last mile connectivity
- ▶ Multi-integration, Urban logistics & circular economy
- ▶ Access to services modal in vulnerable communities
- ▶ Climate adaptation demonstrators and living labs
- ▶ Data collection for climate-risk mapping and decision support
- ▶ Nature-based solutions integrated with active mobility corridors
- ▶ Community engagement and behavioural change initiatives

Fits naturally within:

- ✓ System-level urban projects
- ✓ City demonstrators / living labs
- ✓ Multi-stakeholder regional partnerships
- ✓ Demonstration environments
- ✓ Policy relevance and replication potential

Strong alignment with:

- ▶ Net-zero
- ▶ Resilience
- ▶ Behaviour change



# Follow the challenge, not only the mobility label

Why These Missions Matter for Micromobility?

**Because Micromobility is not only a transport solution -The Adaptation and Smart Cities Missions fund challenges where micromobility can contribute to:**

- Climate resilience and emergency preparedness
- Inclusive and affordable access to services
- Urban regeneration and public space transformation
- Data-driven city management and digital twins
- Citizen engagement and behavioural change
- Circular economy and sustainable logistics

# Funding Outside the Box: Think beyond transport topics

## Look for calls addressing:

- Climate resilience
- Public health and wellbeing
- Circular economy
- Urban regeneration
- Digital twins and city data platforms
- Citizen participation and governance, Social inclusion and accessibility
- Logistics and last-mile delivery

## The questions to ask are:

1. Does micromobility help solve the challenge?
2. Can mobility data strengthen the proposal?
3. Can operators act as demonstration partners?
4. Can cities use micromobility to achieve wider policy goals?

**The best opportunities are often found in non-mobility work programmes.**

# Thank you

[Cinzia.porcedda@iuk.ukri.org](mailto:Cinzia.porcedda@iuk.ukri.org)



UK Research  
and Innovation



Innovate  
UK



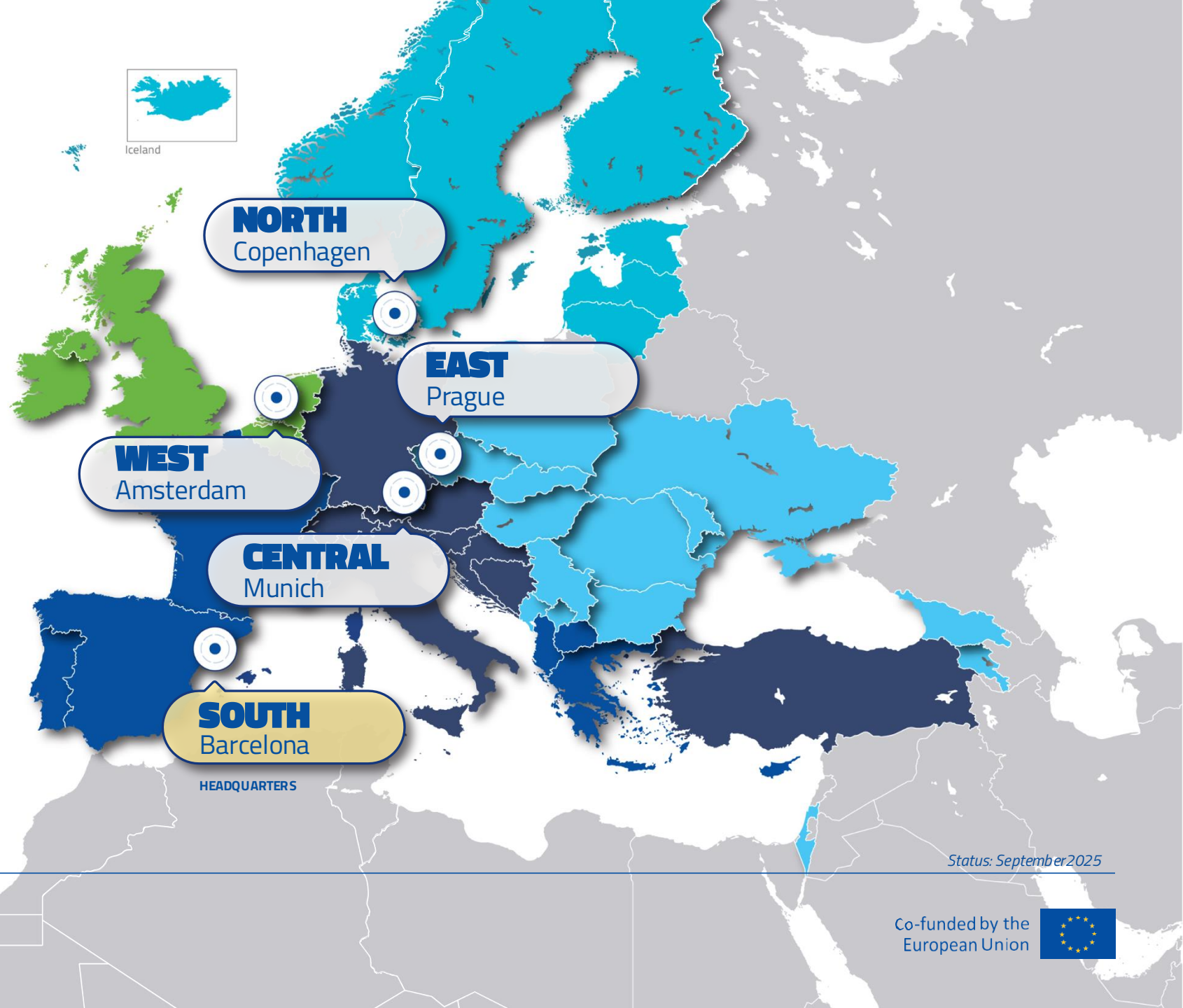
Co-funded by the  
European Union

# Introduction to Innovation and NEB Calls

June 26



We are the leading network for urban transport innovation across Europe



Status: September 2025

# We are the largest European innovation community for urban mobility



Status: September 2025

# Creating impact in cities across Europe

**420+**

PILOTS IN

**185+**

CITIES



# Innovation

Innovation calls



We focus on **innovations** that most efficiently support cities on their way to net zero



**PUBLIC  
TRANSPORT**



**HEALTH AND  
MOBILITY**



**ELECTRIFICATION  
OF TRANSPORT  
AND ALTERNATIVE  
FUELS**



**URBAN  
LOGISTICS**



**MOBILITY DATA  
MANAGEMENT**



# Funding mechanisms

Main funding mechanisms and strategic actions to enable innovation via the EIT Urban Mobility community:

- Pan-European projects to pilot solutions over a period up to 24 months  
**[Strategic Innovation Call]**
- Mono-beneficiary startup/SME projects to demonstrate fast innovation with an end-client  
**[SME Market Expansion Call + RAPTOR Call]**
- Support to identify, apply for and secure alternative European funding for urban mobility projects  
**[Horizon Lab]**





# Programme of calls 2026\*

May

Jun

Jul

Aug

Sep

Oct

Nov

Dec

Jan

Feb

## STRATEGIC INNOVATION OPEN CALL



3<sup>RD</sup> CUT-OFF:  
19 JUNE 2026



4<sup>TH</sup> CUT-OFF:  
FEBRUARY 2027

## SME MARKET EXPANSION OPEN CALL



LAUNCH: OCTOBER 2026 (TBC)  
DEADLINE: DECEMBER 2026 (TBC)

## RAPTOR OPEN CALL



LAUNCH:  
JANUARY 2027  
DEADLINE: MARCH 2027

\*Call dates are indicative and subject to change

# Strategic Innovation Open Call

Looking for ambitious  
collaborative projects  
that accelerate the  
adoption of impactful  
innovation in urban  
mobility

Strategic  
Innovation  
Open Call  
2026-2028



Next cut-off date: 19 June  
2026



Co-funded by the  
European Union



# Next Cut-offs & project start timeline

Year	Cut-off date	Evaluation & selection (including panel hearings for shortlisted proposals)	Expected project start date
<b>2026</b>	<b>3rd cut-off: Jun 2026</b>	July-Oct 2026	January 2027
2027	4th cut-off: Feb 2027	Mar-May 2027	July 2027
	5th cut-off: Jun 2027	July-Oct 2027	January 2028

# Strategic Innovation Open Call



**Multi-year framework** with 5 cut-off dates and 5 focus areas (+ specific topics addressing key market opportunities for specific cut-offs)



Focus on more **ambitious collaborative projects** with higher impact and scalability potential.



Duration, project set-up and budget adapted to project needs with a **max. of 2M€ of EIT funding for up to 24 months.**



**Balanced portfolio of close-to-market solutions and earlier-stage innovations** while ensuring all supported solutions are ready for market deployment by the end of the project.



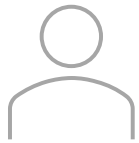
Key fundamentals such as **KPI delivery, real-life pilots and contribution to EIT Urban Mobility Financial Sustainability** remain unchanged.

# Who can apply?



## Minimum requirements

- Two independent legal entities.
- Established in two different European Member States, and/or Third countries associated with Horizon Europe.



## Consortium composition

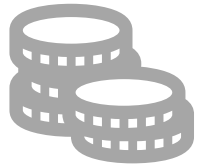
- At least one Commercial Partner responsible for commercialising the solution and contributing to EIT Urban Mobility's Financial Sustainability.



- Other key organisations that will contribute to the success of the project and the future commercialisation.

If an application is selected for funding, then all applicants will be required to become a member of our community and **pay the corresponding membership fee.**

# Funding per project



- Each project may receive a maximum of **2 M EUR** in EIT funding.
  - Projects with disproportionate budgets relative to scope, or lacking value-for-money, will be penalised (see evaluation criteria: Implementation).
- **Co-funding rate for all proposals of minimum 35%** (= EIT UM will reimburse up to 65% of the total eligible project costs). Each partner in the consortium may have different co-funding rates.
- All expenditures must comply with **the Horizon Europe rules**.

# Contribution to EIT Urban Mobility Financial Sustainability

- Each project must contribute to the Financial Sustainability of EIT Urban Mobility (= core aspect of the **EIT grant model**).
- Requirement **applicable to the partner(s) that will commercialise the developed solutions only**, unless a consortia reaches a different agreement.
- EIT Urban Mobility will carry out **financial checks** on all identified commercial partners.
- Three types of contributions are available:
  - Sales pathway
  - Investment pathway
  - New company/spin-out created

# KPIs, Deliverables and monitoring



- **Minimum KPIs:** EITHE02.4 (Marketed Innovations) or EITHE04.4 (Startups created of/for innovation) with a minimum target of 1.
- **Mandatory deliverables:** technical sheet, product plan or business plan, impact assessment methodology and action plan, procurement strategy, demonstration report, impact assessment report and final dissemination report.
- **Project monitoring:** in accordance with the Financial Support Agreement, the Project Implementation Handbook and the rules and procedures established in the Horizon Europe Model Grant Agreement.

# Intellectual Property (IP)



- **Proposed solutions must have a sound IP strategy to ensure future commercialisation:**
  - Cannot be copied by third-parties.
  - Does not infringe on existing third-parties' IP.
- Proposals with planned measures to protect innovations and exploit core IP rights will be positively evaluated (see evaluation criteria: excellence).
- Submission of a **Freedom to Operate** study is recommended.

# Gender and diversity



- **Diversity drives better innovations**
- Proposals should:
  - Demonstrate how gender and diversity are integrated in the design and development of the project outputs.
  - Include a diverse team, including at decision-making level.
- Proposals with generic descriptions about the inclusion of gender and diversity will be penalised (see evaluation criteria: excellence & implementation).
- See our article: [Gender mainstreaming for inclusive mobility](#)

# Example of project consortia: ARISE

- **Challenge:** Increase safety of tram operations
- **Project scope:** development of an Advanced Driver Assistance System (ADAS) for trams, leveraging AI, sensors, and decision support to enhance their safety and reliability, reducing tram accidents by 20% and improve efficiency by 5%.
- **Pilot/demo:** system installed in 20 trams in 4 cities (Lisbon, Antwerp, Utrecht and Zaragoza).



Project leader/tech expert



Solution provider



Test sites & end-users



PROVINCIE UTRECHT



Tech expert

# WHAT IS RAPTOR ?

To be launched in January



Rapid Applications for Transport (**RAPTOR**) is a **city-driven, challenge-based, and agile innovation programme** of EIT Urban Mobility.



RAPTOR matches niche **urban mobility challenges** around Europe with **solutions** from start-ups and SMEs.



Awarded start-ups and SMEs get **€60.000** in EIT funding and **6 months to further develop their solution** to solve the city challenge.

# RAPTOR



## Cohort 2026

**Arteixo, Spain**  
Smart charging data



**Bălți, Moldova**  
Smart bus network



**Berlin, Germany**  
School route safety boost



**Bilbao, Spain**  
Smart access to health centres



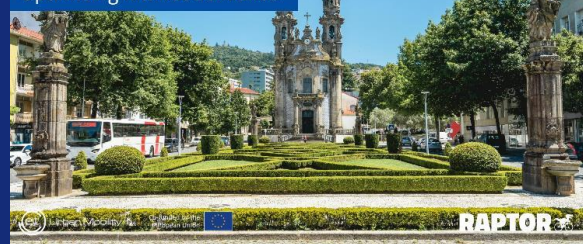
**Brussels, Belgium**  
Inclusive EV charging data



**Edinburgh, United Kingdom**  
Data-driven parking management



**Guimarães, Portugal**  
Optimising market deliveries



**Helsinki, Finland**  
Fleet-based urban data collection



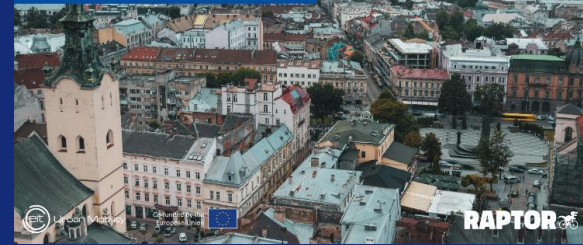
**London, United Kingdom**  
Digital and inclusive kerbside



**Luleå, Sweden**  
Winter road condition data for soft mobility



**Lviv, Ukraine**  
Traffic signals digital inventory



**Nitra, Slovakia**  
Passenger flow analytics



**Salzburg, Austria**  
Increase municipal bicycle fleet use



**Trento, Italy**  
Optimised cycling navigation



**Wiesbaden, Germany**  
Loading zones monitoring



# SME Market Expansion Call

To be launched in October



One single legal entity (SME) –  
mono-beneficiary



Develop a **new product or service**  
for existing clients  
OR  
Significantly improve an existing  
product or service for **expansion**  
**into a new sector or new**  
**geographic area**



EIT contribution of up to **€60,000**  
per selected project  
(no co-funding required)

# EIT Community NEB



# The EIT Community NEB

## *The structure in simple terms*

### European Institute of Innovation & Technology (EIT)

The EIT is a body of the EU and Europe's largest innovation network. It supports innovation by connecting education, research and business across Europe.



### EIT Knowledge and Innovation Communities (KICs)

KICs are sub-organisations connected to the EIT that focus on creating **innovation ecosystems** around specific sectors such as climate, mobility, food and culture. Each KIC supports projects, start-ups and initiatives within its sector.



### The EIT Community New European Bauhaus (NEB)

The EIT Community NEB is a collaboration between several KICs working together to implement the New European Bauhaus. By combining expertise across sectors, it supports projects like yours through funding, programmes, and community building.

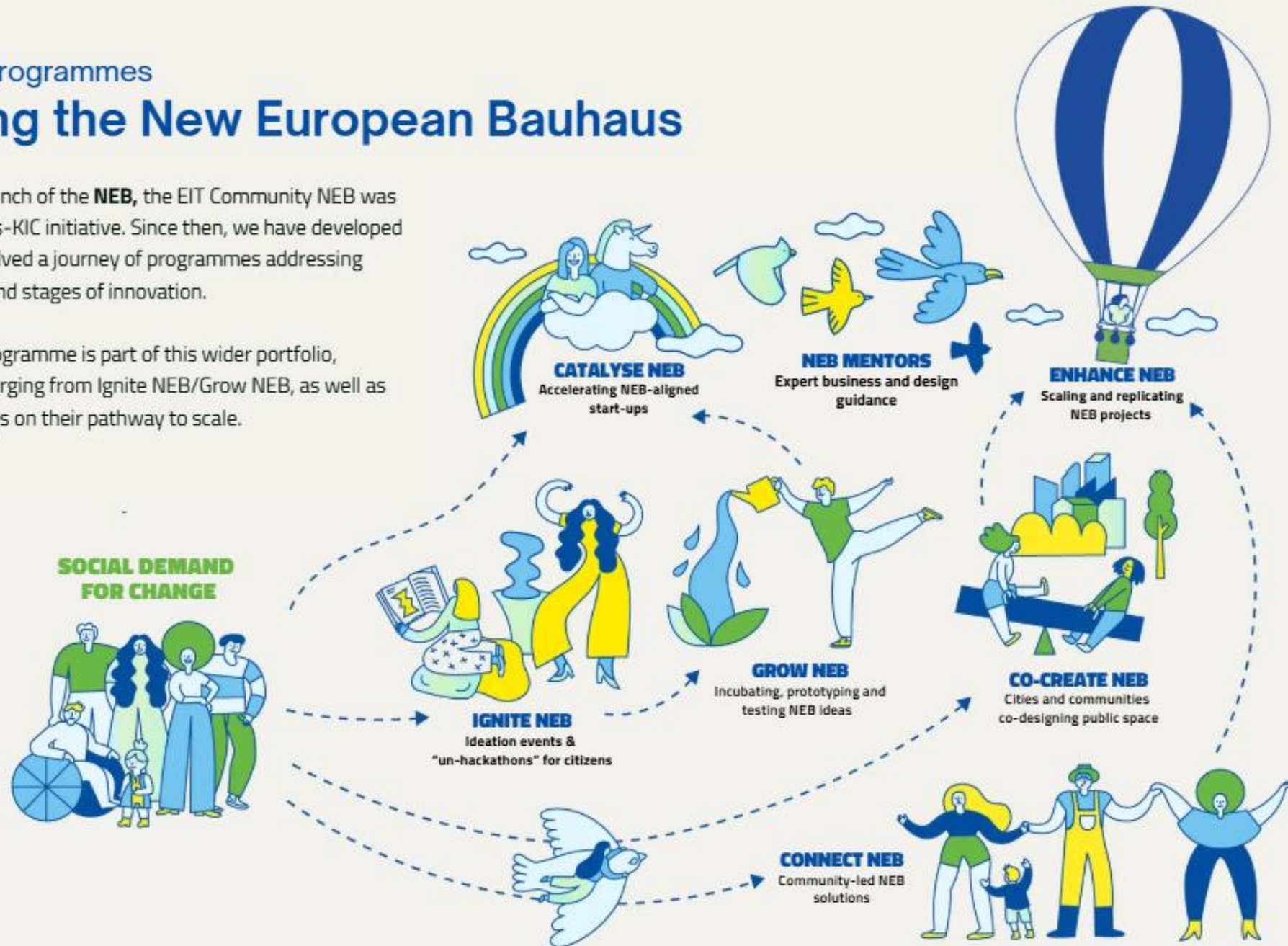


## A journey of programmes

# Delivering the New European Bauhaus

In response to the launch of the **NEB**, the EIT Community NEB was established as a cross-KIC initiative. Since then, we have developed and continuously evolved a journey of programmes addressing different audiences and stages of innovation.

The **Catalyse NEB** programme is part of this wider portfolio, supporting ideas emerging from Ignite NEB/Grow NEB, as well as NEB-aligned start-ups on their pathway to scale.



# EIT Community NEB – Cocreate NEB Call

Next Call opening - July 2026

Co-create NEB is a place-based implementation programme that supports the **transformation of neighbourhood public spaces** through collaboration between communities and public authorities.

It focuses on delivering improvements to the spaces within the neighbourhood(s) where the projects will be implemented, through cooperation and co-creation with the groups directly involved. It requires the involvement of a **consortium of 2 to 4 organisations, with at least one a city**, region, or an entity affiliated with a city or region. Total funding per consortium of 50K€ with co-funding of around 15%.

The programme aims to:

- Enable **interdisciplinary work** by supporting consortia of diverse actors to **collaboratively improve community life**
- Foster **co-creation processes** and closer **relationships with municipal partners**
- Support the **improvement of public realm spaces (including streets)** and place-based planning strategies
- Bring **NEB values** into everyday places, communities, and practices
- Open access to the **NEB and EU ecosystem** for new and underrepresented actors



# Play Accessible Communities (PAC): Creating Izmir Micro Mobility Playbook

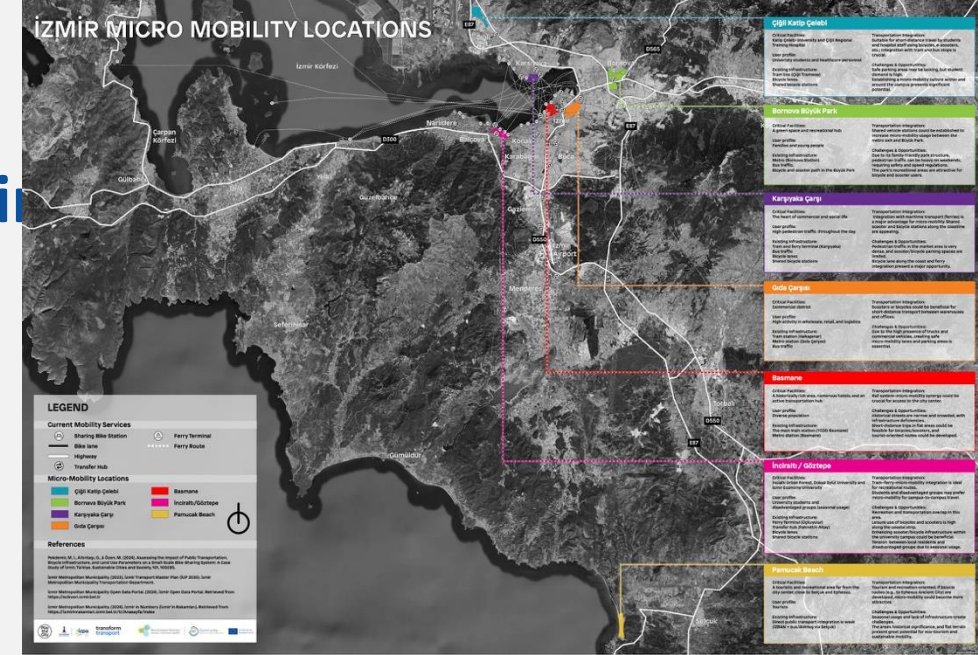
Co-create NEB 2025, Izmir, Turkey

Partners: Sticking Play the City, Fondazione Transform Transport ETS, Izmir Planning Agency (IzPA)

PAC is an innovative initiative aimed at enhancing urban accessibility and promoting social inclusion through the co-creation of a **Micro Mobility Hub in Izmir**.

The project responds to the pressing problem of limited mobility options and poorly accessible public spaces that particularly affect marginalized groups. By combining **sustainable transport solutions**, such as shared bicycles and e-scooters, with collaboratively designed public areas, the hub seeks to establish a transferable model for cities and municipalities.

Implemented between February and December 2025, PAC concentrated on a peri-urban district of Izmir characterized by significant mobility constraints, with the vision of transforming it into a lively, inclusive, and sustainable neighbourhood hub.



# Q&A



Innovate  
UK

Business  
Connect

# Panel: Accessing EU funding



Francesca Cesare-Pintorno  
Knowledge Transfer  
Manager for Digital  
Transport,  
Innovate UK Business  
Connect



Lorena Axinte  
Manager in Mobility and  
Logistics Planning  
Bax Innovation



Beril Alpagut  
Director,  
Decarbon Cities



Simon Whitehead  
Sustainability Operations  
Manager,  
Priority Express



Fiona Coull  
Senior Programme  
Manager  
Cross River Partnership



Innovate  
UK

Business  
Connect

# Q&A



Innovate  
UK

Business  
Connect

# Thank you



Innovate  
UK

Business  
Connect